

## Product datasheet for **TA319020**

### CNTF Rabbit Polyclonal Antibody

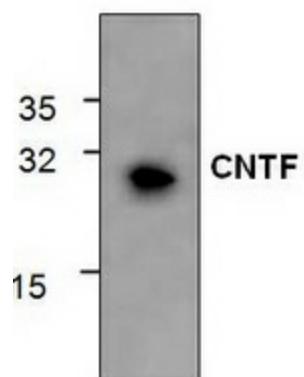
#### Product data:

Product Type:	Primary Antibodies
Applications:	WB
Recommended Dilution:	WB: 0.5-4 ug/ml
Reactivity:	Human, Mouse, Rat
Host:	Rabbit
Isotype:	IgG
Clonality:	Polyclonal
Immunogen:	E. coli expressed recombinant human CNTF
Formulation:	100 µg (0.5 mg/ml) affinity purified rabbit polyclonal antibody in phosphate-buffered saline (PBS) containing 30% glycerol, 0.5% BSA, and 0.01% thimerosal.
Concentration:	lot specific
Purification:	Affinity purified
Conjugation:	Unconjugated
Storage:	Store at -20°C as received.
Stability:	Stable for 12 months from date of receipt.
Gene Name:	ciliary neurotrophic factor
Database Link:	<a href="#">NP_000605</a> <a href="#">Entrez Gene 12803 Mouse</a> <a href="#">Entrez Gene 25707 Rat</a> <a href="#">Entrez Gene 1270 Human</a> <a href="#">P26441</a>
Background:	CNTF (Ciliary Neurotrophic Factor) is a potent neural factor that was originally characterized as a survivability factor for chick ciliary neurons in vitro. CNTF has also been shown to promote survivability and differentiation of other neuronal cell types. CNTF is a 22.9 kDa protein containing 200 amino acid residues.
Synonyms:	HCNTF
Protein Families:	Druggable Genome
Protein Pathways:	Cytokine-cytokine receptor interaction, Jak-STAT signaling pathway



[View online »](#)

## Product images:



Western blot analysis of CNTF using recombinant human CNTF.