

Product datasheet for **TA319015**

PDE3B Rabbit Polyclonal Antibody

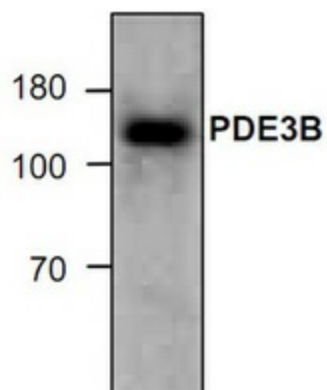
Product data:

Product Type:	Primary Antibodies
Applications:	WB
Recommended Dilution:	WB: 0.5-4 ug/ml
Reactivity:	Human, Mouse, Rat
Host:	Rabbit
Isotype:	IgG
Clonality:	Polyclonal
Immunogen:	Synthetic peptide surrounding amino acid 948 of mouse PDE3B.
Formulation:	100 µg (0.5 mg/ml) affinity purified rabbit polyclonal antibody in phosphate-buffered saline (PBS) containing 30% glycerol, 0.5% BSA, and 0.01% thimerosal.
Concentration:	lot specific
Purification:	Affinity purified
Conjugation:	Unconjugated
Storage:	Store at -20°C as received.
Stability:	Stable for 12 months from date of receipt.
Gene Name:	phosphodiesterase 3B
Database Link:	NP_000913 Entrez Gene 18576 Mouse Entrez Gene 29516 Rat Entrez Gene 5140 Human Q13370
Background:	The phosphodiesterase type-3 (PDE3) family is comprised of 2 isoforms, PDE3A and PDE3B. Phosphodiesterases (PDE) are crucial in the regulation of the intracellular level of the second messenger cAMP by hydrolyzing cAMP to 5'AMP. PDE3B has two splice variants that are expressed in adipocyte tissue, hepatocyte, kidney, spermatocytes and embryonic neuroepithelium. Both PDE3A and PDE3B are potential targets for the treatment of obesity.
Synonyms:	cGIPDE1; HcGIP1
Protein Families:	Druggable Genome, Transmembrane
Protein Pathways:	Insulin signaling pathway, Progesterone-mediated oocyte maturation, Purine metabolism



[View online »](#)

Product images:



Western blot analysis of PDE3B with lysate from 3T3 cells.