

## Product datasheet for **TA319014**

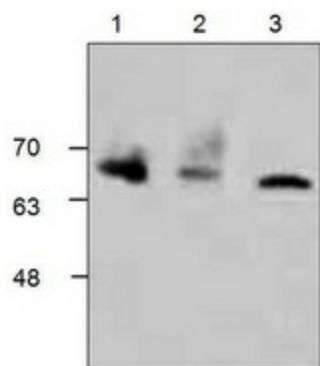
### PCK1 Rabbit Polyclonal Antibody

#### Product data:

Product Type:	Primary Antibodies
Applications:	WB
Recommended Dilution:	WB: 0.5-4 ug/ml
Reactivity:	Human, Mouse, Rat
Host:	Rabbit
Isotype:	IgG
Clonality:	Polyclonal
Immunogen:	Synthetic peptide surroundign amino acid 507 of mouse PEPCK-C
Formulation:	100 µg (0.5 mg/ml) affinity purified rabbit polyclonal antibody in phosphate-buffered saline (PBS) containing 30% glycerol, 0.5% BSA, and 0.01% thimerosal.
Concentration:	lot specific
Purification:	Affinity purified
Conjugation:	Unconjugated
Storage:	Store at -20°C as received.
Stability:	Stable for 12 months from date of receipt.
Gene Name:	phosphoenolpyruvate carboxykinase 1
Database Link:	<a href="#">NP_002582</a> <a href="#">Entrez Gene 18534 Mouse</a> <a href="#">Entrez Gene 362282 Rat</a> <a href="#">Entrez Gene 5105 Human</a> <a href="#">P35558</a>
Background:	Phosphoenolpyruvate carboxykinase (PEPCK) is a key enzyme in stimulating glucose production. PEPCK catalyzes the conversion of oxaloacetate to phosphoenolpyruvate. There are two forms of PEPCK.,the cytosolic form also known as PEPCK-C and the mitochondrial form, or PEPCK-M.
Synonyms:	PEPCK-C; PEPCK1; PEPCKC
Protein Families:	Druggable Genome
Protein Pathways:	Adipocytokine signaling pathway, Citrate cycle (TCA cycle), Glycolysis / Gluconeogenesis, Insulin signaling pathway, Metabolic pathways, PPAR signaling pathway, Pyruvate metabolism



[View online »](#)

**Product images:**

Western blot analysis of PCK1-C with lysate from rat kidney (Lane 1), 3T3 cells (Lane 2) and Jurkat cells (Lane 3).