

Product datasheet for TA319013

Perilipin-1 (PLIN1) Rabbit Polyclonal Antibody

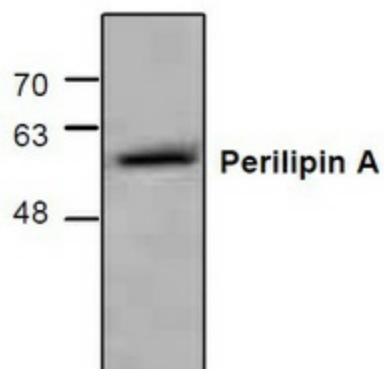
Product data:

Product Type:	Primary Antibodies
Applications:	WB
Recommended Dilution:	WB: 0.5-4 ug/ml
Reactivity:	Human, Mouse, Rat
Host:	Rabbit
Isotype:	IgG
Clonality:	Polyclonal
Immunogen:	Synthetic peptide surrounding amino acid 510 of mouse Perilipin A.
Formulation:	100 µg (0.5 mg/ml) affinity purified rabbit polyclonal antibody in phosphate-buffered saline (PBS) containing 30% glycerol, 0.5% BSA, and 0.01% thimerosal.
Concentration:	lot specific
Purification:	Affinity purified
Conjugation:	Unconjugated
Storage:	Store at -20°C as received.
Stability:	Stable for 12 months from date of receipt.
Gene Name:	perilipin 1
Database Link:	NP_001138783 Entrez Gene 25629 Rat Entrez Gene 103968 Mouse Entrez Gene 5346 Human O60240
Background:	Perilipin is a protein produced and secreted by adipose cells. This protein is localized exclusively to the surface of lipid droplets. In response to lipolytic stimuli, perilipin is phosphorylated by protein kinase A. Once activated, perilipin has inhibitory effects on hormone-sensitive lipase (HSL), a protein that mediates the hydrolysis of triacylglycerol, the major form of stored energy in the body. Perilipin expression is limited to adipocytes and steroidogenic cells.
Synonyms:	FPLD4; PERI; PLIN
Protein Families:	Druggable Genome


[View online »](#)

Protein Pathways: PPAR signaling pathway

Product images:



Western blot analysis of Perilipin A in Jurkat cell lysate.