

Product datasheet for **TA319012**

Lipoprotein lipase (LPL) Rabbit Polyclonal Antibody

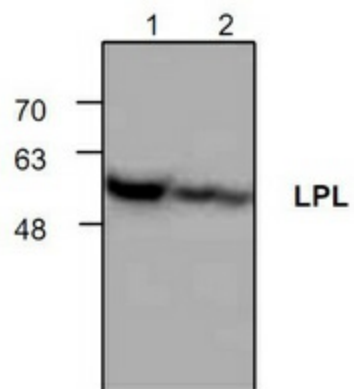
Product data:

| | |
|-----------------------|--|
| Product Type: | Primary Antibodies |
| Applications: | WB |
| Recommended Dilution: | WB: 0.5-4 ug/ml |
| Reactivity: | Human, Mouse, Rat |
| Host: | Rabbit |
| Isotype: | IgG |
| Clonality: | Polyclonal |
| Immunogen: | Synthetic peptide surrounding amino acid 427 of rat PLP. |
| Formulation: | 100 µg (0.5 mg/ml) affinity purified rabbit polyclonal antibody in phosphate-buffered saline (PBS) containing 30% glycerol, 0.5% BSA, and 0.01% thimerosal. |
| Concentration: | lot specific |
| Purification: | Affinity purified |
| Conjugation: | Unconjugated |
| Storage: | Store at -20°C as received. |
| Stability: | Stable for 12 months from date of receipt. |
| Gene Name: | lipoprotein lipase |
| Database Link: | NP_000228 Entrez Gene 16956 Mouse Entrez Gene 24539 Rat Entrez Gene 4023 Human P06858 |
| Background: | Lipoprotein lipase (LPL) is mainly expressed in the heart, muscle and adipose tissue. LPL is a homodimer that mediates the hydrolysis of triglycerides of very low density lipoproteins and also function as ligand/bridging factor for receptor-mediated lipoprotein uptake. Defects in LPL may result in hypertriglyceridemia. |
| Synonyms: | HDLCQ11; LIPD |
| Protein Families: | Druggable Genome |
| Protein Pathways: | Alzheimer's disease, Glycerolipid metabolism, PPAR signaling pathway |



[View online »](#)

Product images:



Western blot analysis of LPL with lysate from rat kidney (Lane 1) and 3T3 cells (Lane 2).