

Product datasheet for **TA319011**

PDP2 Rabbit Polyclonal Antibody

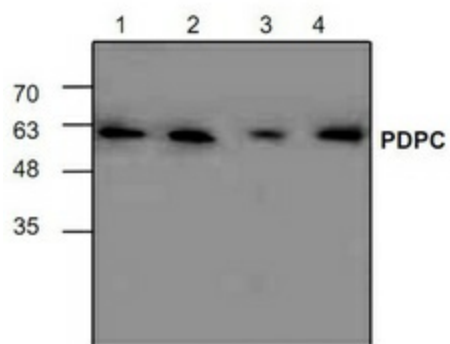
Product data:

Product Type:	Primary Antibodies
Applications:	WB
Recommended Dilution:	WB: 0.5-4 ug/ml
Reactivity:	Human, Mouse, Rat
Host:	Rabbit
Isotype:	IgG
Clonality:	Polyclonal
Immunogen:	Synthetic peptide surrounding amino acid 427 of human PDPC subunit 1.
Formulation:	100 µg (0.5 mg/ml) affinity purified rabbit polyclonal antibody in phosphate-buffered saline (PBS) containing 30% glycerol, 0.5% BSA, and 0.01% thimerosal.
Concentration:	lot specific
Purification:	Affinity purified
Conjugation:	Unconjugated
Storage:	Store at -20°C as received.
Stability:	Stable for 12 months from date of receipt.
Gene Name:	pyruvate dehydrogenase phosphatase catalytic subunit 2
Database Link:	NP_065837 Entrez Gene 246311 Rat Entrez Gene 382051 Mouse Entrez Gene 57546 Human Q9P2J9
Background:	PDP2, Pyruvate dehydrogenase phosphatase 2, catalyzes the dephosphorylation and activation of E1 component to reverse the effects of pyruvate dehydrogenase kinases. Pyruvate dehydrogenase (E1) is one of the three components (E1, E2, and E3) of the large pyruvate dehydrogenase complex.
Synonyms:	PDPC 2; PPM2B; PPM2C2
Protein Families:	Druggable Genome, Phosphatase



[View online »](#)

Product images:



Western blot analysis of PDP2 with lysate from Jurkat cells (Lane 1 & 2), 3T3 cells (Lane 3) and rat kidney tissue (Lane 4).