

## Product datasheet for **TA319007**

### PGC1 alpha (PPARGC1A) Rabbit Polyclonal Antibody

#### Product data:

Product Type:	Primary Antibodies
Applications:	WB
Recommended Dilution:	WB: 0.5-4 ug/ml
Reactivity:	Human, Mouse, Rat
Host:	Rabbit
Isotype:	IgG
Clonality:	Polyclonal
Immunogen:	Synthetic peptide surrounding amino acid 766 of mouse PGC-1 alpha
Formulation:	100 µg (0.5 mg/ml) affinity purified rabbit polyclonal antibody in phosphate-buffered saline (PBS) containing 30% glycerol, 0.5% BSA, and 0.01% thimerosal.
Concentration:	lot specific
Purification:	Affinity purified
Conjugation:	Unconjugated
Storage:	Store at -20°C as received.
Stability:	Stable for 12 months from date of receipt.
Gene Name:	PPARG coactivator 1 alpha
Database Link:	<a href="#">NP_037393</a> <a href="#">Entrez Gene 19017 Mouse</a> <a href="#">Entrez Gene 83516 Rat</a> <a href="#">Entrez Gene 10891 Human</a> <a href="#">Q9UBK2</a>
Background:	The protein encoded by this gene is a transcriptional coactivator that regulates the genes involved in energy metabolism. This protein interacts with PPARGgamma, which permits the interaction of this protein with multiple transcription factors. This protein can interact with, and regulate the activities of cAMP response element binding protein (CREB) and nuclear respiratory factors (NRFs). It provides a direct link between external physiological stimuli and the regulation of mitochondrial biogenesis, and is a major factor that regulates muscle fiber type determination. This protein may also be involved in controlling blood pressure, regulating cellular cholesterol homeostasis, and the development of obesity.
Synonyms:	LEM6; PGC-1(alpha); PGC-1alpha; PGC-1v; PGC1; PGC1A; PPARGC1

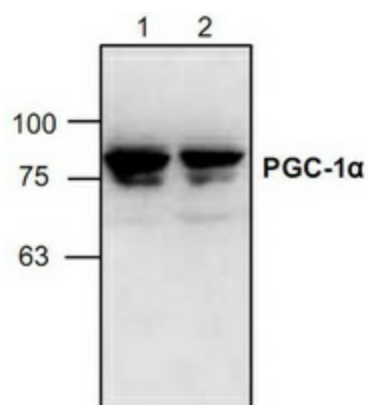


[View online »](#)

Protein Families: Druggable Genome, Transcription Factors

Protein Pathways: Adipocytokine signaling pathway, Huntington's disease, Insulin signaling pathway

**Product images:**



Western blot analysis of PGC-1alpha with Jurkat cell lysate (Lane 1 & 2).