

Product datasheet for **TA319006**

PINK1 Rabbit Polyclonal Antibody

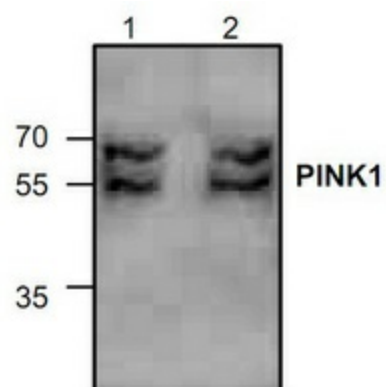
Product data:

Product Type:	Primary Antibodies
Applications:	WB
Recommended Dilution:	WB: 0.5-4 ug/ml
Reactivity:	Human, Mouse, Rat
Host:	Rabbit
Isotype:	IgG
Clonality:	Polyclonal
Immunogen:	Synthetic peptide surrounding amino acid 488 of mouse PINK1
Formulation:	100 µg (0.5 mg/ml) affinity purified rabbit polyclonal antibody in phosphate-buffered saline (PBS) containing 30% glycerol, 0.5% BSA, and 0.01% thimerosal.
Concentration:	lot specific
Purification:	Affinity purified
Conjugation:	Unconjugated
Storage:	Store at -20°C as received.
Stability:	Stable for 12 months from date of receipt.
Gene Name:	PTEN induced putative kinase 1
Database Link:	NP_115785 Entrez Gene 68943 Mouse Entrez Gene 298575 Rat Entrez Gene 65018 Human Q9BXM7
Background:	PINK1 (PTEN-induced putative kinase 1) is a serine/threonine protein kinase found in mitochondria. PINK1 protects cell from stress-induced mitochondrial dysfunction. Mutation in this gene is associated with the early onset of Parkinson's disease.
Synonyms:	BRPK; PARK6
Protein Families:	Druggable Genome, Protein Kinase
Protein Pathways:	Parkinson's disease



[View online »](#)

Product images:



Western blot analysis of PINK1 expression in Jurkat cell lysate (Lane 1 & 2).