

## Product datasheet for **TA319003**

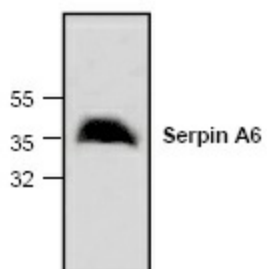
### SERPINA6 Rabbit Polyclonal Antibody

#### Product data:

Product Type:	Primary Antibodies
Applications:	WB
Recommended Dilution:	WB: 0.5-4 ug/ml
Reactivity:	Rat
Host:	Rabbit
Isotype:	IgG
Clonality:	Polyclonal
Immunogen:	Synthetic peptide surrounding amino acid 131 of rat SerpinA6
Formulation:	100 µg (0.5 mg/ml) affinity purified rabbit polyclonal antibody in phosphate-buffered saline (PBS) containing 30% glycerol, 0.5% BSA, and 0.01% thimerosal.
Concentration:	lot specific
Purification:	Affinity purified
Conjugation:	Unconjugated
Storage:	Store at -20°C as received.
Stability:	Stable for 12 months from date of receipt.
Gene Name:	serpin family A member 6
Database Link:	<a href="#">NP_001747</a> <a href="#">Entrez Gene 299270 Rat P08185</a>
Background:	Serpin A6 is a secreted glycoprotein that belongs to the serpin family of protease inhibitors. Serpin A6 is produced from hepatocytes in the liver and is involved in the transport of glucocorticoids and progestins in the blood.
Synonyms:	CBG
Protein Families:	Druggable Genome, Secreted Protein



[View online »](#)

**Product images:**

Western blot analysis of Serpin A6 expression in rat kidney tissue lysate.