

Product datasheet for **TA319002**

Relaxin 2 (RLN2) Rabbit Polyclonal Antibody

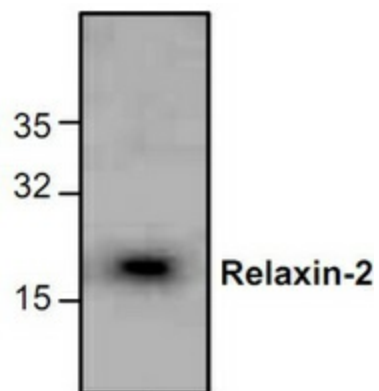
Product data:

Product Type:	Primary Antibodies
Applications:	WB
Recommended Dilution:	WB: 0.5-4 ug/ml
Reactivity:	Human
Host:	Rabbit
Isotype:	IgG
Clonality:	Polyclonal
Immunogen:	Synthetic peptide surrounding amino acid 98 of human Relaxin-2
Formulation:	100 µg (0.5 mg/ml) affinity purified rabbit polyclonal antibody in phosphate-buffered saline (PBS) containing 30% glycerol, 0.5% BSA, and 0.01% thimerosal.
Concentration:	lot specific
Purification:	Affinity purified
Conjugation:	Unconjugated
Storage:	Store at -20°C as received.
Stability:	Stable for 12 months from date of receipt.
Gene Name:	relaxin 2
Database Link:	NP_604390 Entrez Gene 6019 Human P04090
Background:	Relaxin 2 is a peptide hormone produced by the corpora lutea of the ovary during pregnancy in many mammalian species. It is secreted into the blood just before parturition to help facilitate the birth process. Like insulin, relaxin is a heterodimer of two peptide chains A and B that are covalently linked by disulfide bonds.
Synonyms:	bA12D24.1.1; bA12D24.1.2; H2; H2-RLX; RLXH2
Protein Families:	Secreted Protein



[View online »](#)

Product images:



Western blot analysis of Relaxin-2 expression in Jurkat cell lysate.