

## Product datasheet for **TA319000**

### Hemopexin (HPX) Rabbit Polyclonal Antibody

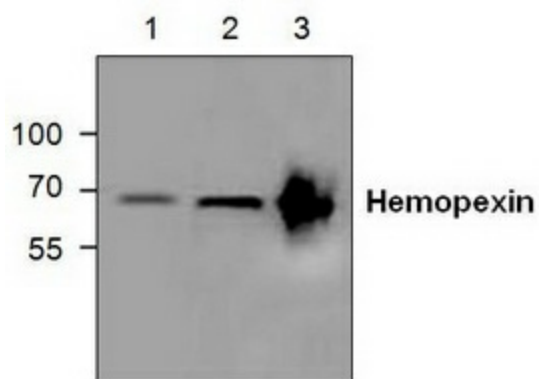
#### Product data:

Product Type:	Primary Antibodies
Applications:	WB
Recommended Dilution:	WB: 0.5-4 µg/ml
Reactivity:	Human, Mouse, Rat
Host:	Rabbit
Isotype:	IgG
Clonality:	Polyclonal
Immunogen:	Synthetic peptide surrounding amino acid 436 of mouse Hemopexin
Formulation:	100 µg (0.5 mg/ml) affinity purified rabbit polyclonal antibody in phosphate-buffered saline (PBS) containing 30% glycerol, 0.5% BSA, and 0.01% thimerosal.
Concentration:	lot specific
Purification:	Affinity purified
Conjugation:	Unconjugated
Storage:	Store at -20°C as received.
Stability:	Stable for 12 months from date of receipt.
Gene Name:	hemopexin
Database Link:	<a href="#">NP_000604</a> <a href="#">Entrez Gene 15458 Mouse</a> <a href="#">Entrez Gene 58917 Rat</a> <a href="#">Entrez Gene 3263 Human</a> <a href="#">P02790</a>
Background:	Hemopexin (HPX) is a plasma protein that has the highest binding affinity for heme. HPX prevents heme-mediated oxidative stress and heme-bound iron loss by transporting heme to the liver for breakdown.
Synonyms:	HX
Protein Families:	Secreted Protein



[View online »](#)

## Product images:



Western blot analysis of Hemopexin expression in lysate from Jurkat cells (Lane 1), 3T3 cells (Lane 2) and Rat kidney (Lane 3).