

Product datasheet for **TA318995**

Dectin 1 (CLEC7A) Rabbit Polyclonal Antibody

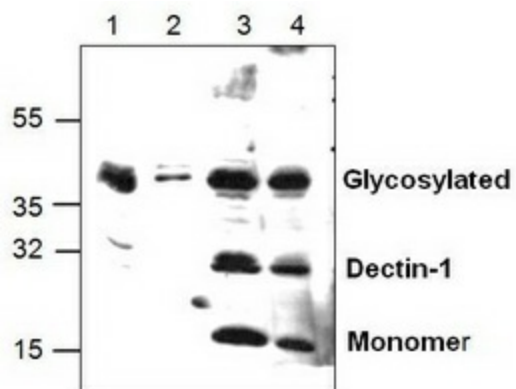
Product data:

Product Type:	Primary Antibodies
Applications:	WB
Recommended Dilution:	WB: 0.5-4 ug/ml
Reactivity:	Human, Mouse, Rat
Host:	Rabbit
Isotype:	IgG
Clonality:	Polyclonal
Immunogen:	Synthetic peptide surrounding amino acid 161 of human Dectin-1
Formulation:	100 µg (0.5 mg/ml) affinity purified rabbit polyclonal antibody in phosphate-buffered saline (PBS) containing 30% glycerol, 0.5% BSA, and 0.01% thimerosal.
Concentration:	lot specific
Purification:	Affinity purified
Conjugation:	Unconjugated
Storage:	Store at -20°C as received.
Stability:	Stable for 12 months from date of receipt.
Gene Name:	C-type lectin domain family 7 member A
Database Link:	NP_922945 Entrez Gene 56644 Mouse Entrez Gene 502902 Rat Entrez Gene 64581 Human Q9BXN2
Background:	Dectin-1 also known as beta-glucan receptor is a small type II transmembrane receptor containing lectin-like carbohydrate recognition domain. Dectin-1 plays a role in beta-glucan dependant, nonopsonic recognition of zymosan by primary macropahge. Dectin-1 is expressed on macrophages and neutrophils and on some dendritic cells subpopulation.
Synonyms:	BGR; CANDF4; CD369; CLECSF12; DECTIN1; SCARE2
Protein Families:	Druggable Genome, Transmembrane



[View online »](#)

Product images:



Western blot analysis of Dectin-1 expression in lysate from rat kidney (Lane 1), 3T3 cells (Lane 2) and Jurkat cells (Lane 3 & 4).