

Product datasheet for **TA318994**

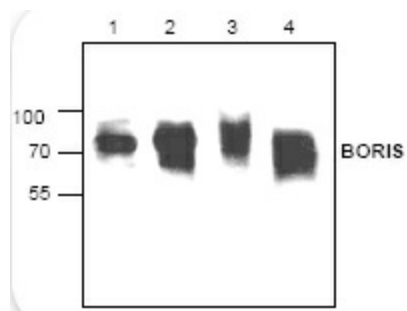
CTCF Rabbit Polyclonal Antibody

Product data:

Product Type:	Primary Antibodies
Applications:	WB
Recommended Dilution:	WB: 0.5-4 ug/ml
Reactivity:	Human, Mouse, Rat
Host:	Rabbit
Isotype:	IgG
Clonality:	Polyclonal
Immunogen:	Synthetic peptide surrounding amino acid 14 of rat BORIS
Formulation:	100 µg (0.5 mg/ml) affinity purified rabbit polyclonal antibody in phosphate-buffered saline (PBS) containing 30% glycerol, 0.5% BSA, and 0.01% thimerosal.
Concentration:	lot specific
Purification:	Affinity purified
Conjugation:	Unconjugated
Storage:	Store at -20°C as received.
Stability:	Stable for 12 months from date of receipt.
Gene Name:	CCCTC-binding factor
Database Link:	NP_006556 Entrez Gene 13018 Mouse Entrez Gene 83726 Rat Entrez Gene 10664 Human P49711
Background:	Brother of the regulator of imprinted sites (BORIS) is a transcription factor also known as CCCTC-binding factor like protein (CTCF). Boris is usually expressed at a high level in the testis which correlates with male germ cell development and is also abnormally activated in a broad range of human cancers. Boris can be found in the nucleus as well as in the cytoplasm.
Synonyms:	MRD21
Protein Families:	Transcription Factors



[View online »](#)

Product images:

Western blot analysis of Boris expression in lysate from Jurkat cells (Lane 1 & 2), 3T3 cells (Lane 3) and Rat kidney (Lane 4).