

Product datasheet for **TA318991**

SPHK1 Rabbit Polyclonal Antibody

Product data:

Product Type:	Primary Antibodies
Applications:	WB
Recommended Dilution:	WB: 0.5-4 ug/ml
Reactivity:	Human, Mouse, Rat
Host:	Rabbit
Isotype:	IgG
Clonality:	Polyclonal
Immunogen:	Synthetic peptide corresponding to residues surrounding amino acid 180 of mouse Sphingosine Kinase 1
Formulation:	100 µg (0.5 mg/ml) affinity purified rabbit polyclonal antibody in phosphate-buffered saline (PBS) containing 30% glycerol, 0.5% BSA, and 0.01% thimerosal.
Concentration:	lot specific
Purification:	Affinity purified
Conjugation:	Unconjugated
Storage:	Store at -20°C as received.
Stability:	Stable for 12 months from date of receipt.
Gene Name:	sphingosine kinase 1
Database Link:	NP_001136073 Entrez Gene 20698 Mouse Entrez Gene 170897 Rat Entrez Gene 8877 Human Q9NYA1
Background:	Sphingosine Kinase (SphK) is a conserved lipid kinase that catalyzes the phosphorylation of sphingolipid sphingosine to sphingosine-1-phosphate (SIP). SIP receptors coupled to cell surface G protein to regulate cell growth, survival, motility and inflammatory responses. There are two types of SphK, SphK1 and SphK2. SphK1 is found in the cytosol and migrates to the membrane when activated. SphK1 has been associated with cell growth, prevention of apoptosis and cellular transformation. SphK2 is found mainly in the nucleus and in contrast to SphK1, it enhances the rate of apoptosis.
Synonyms:	SPHK

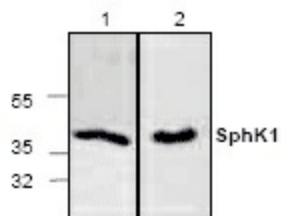


[View online »](#)

Protein Families: Druggable Genome

Protein Pathways: Calcium signaling pathway, Fc gamma R-mediated phagocytosis, Metabolic pathways, Sphingolipid metabolism, VEGF signaling pathway

Product images:



Western blot analysis of Sphingosine Kinase 1 in Jurkat cell lysate (Lane 1) and rat kidney tissue lysate (Lane 2).