

## Product datasheet for **TA318990**

### Mitofusin 2 (MFN2) Rabbit Polyclonal Antibody

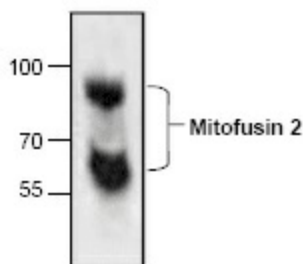
#### Product data:

Product Type:	Primary Antibodies
Applications:	WB
Recommended Dilution:	WB: 0.5-4 ug/ml
Reactivity:	Human, Mouse, Rat
Host:	Rabbit
Isotype:	IgG
Clonality:	Polyclonal
Immunogen:	Synthetic peptide corresponding to residues surrounding amino acid 719 of human Mitofusin 2
Formulation:	100 µg (0.5 mg/ml) affinity purified rabbit polyclonal antibody in phosphate-buffered saline (PBS) containing 30% glycerol, 0.5% BSA, and 0.01% thimerosal.
Concentration:	lot specific
Purification:	Affinity purified
Conjugation:	Unconjugated
Storage:	Store at -20°C as received.
Stability:	Stable for 12 months from date of receipt.
Gene Name:	mitofusin 2
Database Link:	<a href="#">NP_055689</a> <a href="#">Entrez Gene 64476 Rat</a> <a href="#">Entrez Gene 170731 Mouse</a> <a href="#">Entrez Gene 9927 Human</a> <a href="#">O95140</a>
Background:	Mitofusin 2 (Mfn 2) is mostly expressed in the heart and muscle tissues. It is a transmembrane protein that mediates mitochondria fusion and plays a central role in the maintenance of mitochondrial morphology. A GTPase domain is required for the function of Mitofusin proteins. Mutations in Mfn2 can lead to Charcot-Marie-Tooth disease, a common inherited disorder of the peripheral nervous system. Mfn2 may also be associated with obesity and/or apoptosis.
Synonyms:	CMT2A; CMT2A2; CMT2A2A; CMT2A2B; CPRP1; HMSN6A; HSG; MARF
Protein Families:	Transmembrane



[View online »](#)

## Product images:



Western blot analysis of Mitofusin 2 in Jurkat cell lysate.