

## Product datasheet for **TA318988**

### SCD1 (SCD) Rabbit Polyclonal Antibody

#### Product data:

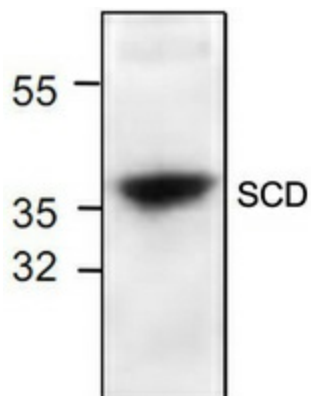
Product Type:	Primary Antibodies
Applications:	WB
Recommended Dilution:	WB: 0.5-4 µg/ml
Reactivity:	Human, Mouse, Pig, Hamster, Rat
Host:	Rabbit
Isotype:	IgG
Clonality:	Polyclonal
Immunogen:	Synthetic peptide surrounding amino acid 206 of rat SCD
Formulation:	100 µg (0.5 mg/ml) affinity purified rabbit polyclonal antibody in phosphate-buffered saline (PBS) containing 30% glycerol, 0.5% BSA, and 0.01% thimerosal.
Concentration:	lot specific
Purification:	Affinity purified
Conjugation:	Unconjugated
Storage:	Store at -20°C as received.
Stability:	Stable for 12 months from date of receipt.
Gene Name:	stearoyl-CoA desaturase
Database Link:	<a href="#">NP_005054</a> <a href="#">Entrez Gene 246074 Rat</a> <a href="#">Entrez Gene 6319 Human</a> <a href="#">O00767</a>
Background:	Stearoyl-CoA desaturase (SCD) is a regulatory enzyme involved in the synthesis of oleate and palmitoleate. Oleate and palmitoleate are the main components of membrane phospholipid, triglycerides and cholesterol esters. SCD plays an important role in cellular cholesterol homeostasis and also in the secretion processes of triacylglycerol and phospholipid. Inhibition of SCD could be a useful treatment for metabolic disorders such as obesity and hepatic steatosis.
Synonyms:	FADS5; hSCD1; MSTP008; SCD1; SCDOS
Protein Families:	Transmembrane



[View online »](#)

Protein Pathways: Biosynthesis of unsaturated fatty acids, PPAR signaling pathway

**Product images:**



Western blot analysis of SCD with rat kidney tissue lysate.