

Product datasheet for **TA318987**

Relaxin 1 (RLN1) Rabbit Polyclonal Antibody

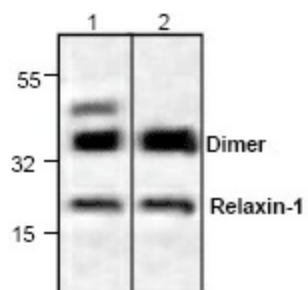
Product data:

Product Type:	Primary Antibodies
Applications:	WB
Recommended Dilution:	WB: 0.5-4 ug/ml
Reactivity:	Human, Mouse, Rat
Host:	Rabbit
Isotype:	IgG
Clonality:	Polyclonal
Immunogen:	Synthetic peptide corresponding to residues surrounding amino acid 130 of rat Relaxin-1
Formulation:	100 µg (0.5 mg/ml) affinity purified rabbit polyclonal antibody in phosphate-buffered saline (PBS) containing 30% glycerol, 0.5% BSA, and 0.01% thimerosal.
Concentration:	lot specific
Purification:	Affinity purified
Conjugation:	Unconjugated
Storage:	Store at -20°C as received.
Stability:	Stable for 12 months from date of receipt.
Gene Name:	relaxin 1
Database Link:	NP_008842 Entrez Gene 19773 Mouse Entrez Gene 25616 Rat Entrez Gene 6013 Human P04808
Background:	Relaxin is a peptide hormone belonging to the insulin gene superfamily. It is made by the corpora lutea of the ovaries during pregnancy in many mammalian species. The secretion of the hormone into the blood stream just before parturition results in softening and lengthening of the pubic symphysis and a softening of the cervix, which facilitates the process of birth. Relaxin-1 is proteolytically processed into a heterodimer that has two peptide chains, A and B that are covalently linked by disulfide bonds.
Synonyms:	bA12D24.3.1; bA12D24.3.2; H1; H1RLX; RLXH1
Protein Families:	Secreted Protein



[View online »](#)

Product images:



Western blot analysis of Relaxin-1 with Jurkat cell lysate (Lane 1) and rat kidney tissue lysate (Lane 2).