

Product datasheet for **TA318986**

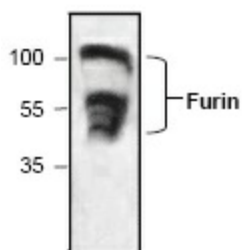
FURIN Rabbit Polyclonal Antibody

Product data:

Product Type:	Primary Antibodies
Applications:	WB
Recommended Dilution:	WB: 0.5-4 ug/ml
Reactivity:	Human, Mouse, Rat, Bovine, Sheep
Host:	Rabbit
Isotype:	IgG
Clonality:	Polyclonal
Immunogen:	Synthetic peptide corresponding to residues surrounding amino acids 779 of mouse Furin/PACE
Formulation:	100 µg (0.5 mg/ml) affinity purified rabbit polyclonal antibody in phosphate-buffered saline (PBS) containing 30% glycerol, 0.5% BSA, and 0.01% thimerosal.
Concentration:	lot specific
Purification:	Affinity purified
Conjugation:	Unconjugated
Storage:	Store at -20°C as received.
Stability:	Stable for 12 months from date of receipt.
Gene Name:	furin, paired basic amino acid cleaving enzyme
Database Link:	NP_002560 Entrez Gene 18550 Mouse Entrez Gene 54281 Rat Entrez Gene 5045 Human P09958
Background:	Furin is a ubiquitous protein located within the trans-Golgi network. It is found in many tissues and cell lines including MDCK, HeLa, HepG2 and NIH-3T3. Furin is a proprotein convertase that is responsible for the proteolytic maturation of many precursor proteins that are secreted from the constitutive secretory pathway
Synonyms:	FUR; PACE; PCSK3; SPC1
Protein Families:	Druggable Genome, Protease, Transmembrane



[View online »](#)

Product images:

Western blot analysis of Furin in rat kidney tissue lysate.