

Product datasheet for **TA318984**

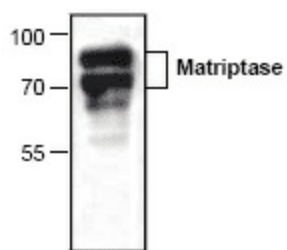
ST14 Rabbit Polyclonal Antibody

Product data:

Product Type:	Primary Antibodies
Applications:	WB
Recommended Dilution:	WB: 0.5-4 ug/ml
Reactivity:	Human, Mouse, Rat
Host:	Rabbit
Isotype:	IgG
Clonality:	Polyclonal
Immunogen:	Synthetic peptide surrounding amino acid 629 of rat Matriptase
Formulation:	100 µg (0.5 mg/ml) affinity purified rabbit polyclonal antibody in phosphate-buffered saline (PBS) containing 30% glycerol, 0.5% BSA, and 0.01% thimerosal.
Concentration:	lot specific
Purification:	Affinity purified
Conjugation:	Unconjugated
Storage:	Store at -20°C as received.
Stability:	Stable for 12 months from date of receipt.
Gene Name:	suppression of tumorigenicity 14
Database Link:	NP_068813 Entrez Gene 19143 Mouse Entrez Gene 114093 Rat Entrez Gene 6768 Human Q9Y5Y6
Background:	Matriptase or MT-SP1 is an epithelial-derived type II transmembrane serine protease that is highly expressed in human cancer-derived cell lines. Matriptase cleaves and activates protease activated receptor-2, pro-urokinase plasminogen activator and pro-hepatocyte growth factor. Matriptase is strongly inhibited by the hepatocyte growth factor activator inhibitor type 1 (HAI-1), which is a reactive site loop of Kunitz domain and also a transmembrane serine protease inhibitor.
Synonyms:	ARCI11; HAI; MT-SP1; MTSP1; PRSS14; SNC19; TADG15; TMPRSS14
Protein Families:	Druggable Genome, Protease, Transmembrane



[View online »](#)

Product images:

Western blot analysis of Matriptase expression with Jurkat cell lysate.