

## Product datasheet for **TA318983**

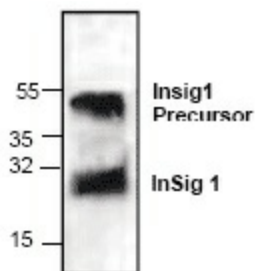
### INSIG1 Rabbit Polyclonal Antibody

#### Product data:

Product Type:	Primary Antibodies
Applications:	WB
Recommended Dilution:	WB: 0.5-4 µg/ml
Reactivity:	Human, Mouse, Bovine, Hamster, Rat
Host:	Rabbit
Isotype:	IgG
Clonality:	Polyclonal
Immunogen:	Synthetic peptide surrounding amino acid 248 of rat Insig1
Formulation:	100 µg (0.5 mg/ml) affinity purified rabbit polyclonal antibody in phosphate-buffered saline (PBS) containing 30% glycerol, 0.5% BSA, and 0.01% thimerosal.
Concentration:	lot specific
Purification:	Affinity purified
Conjugation:	Unconjugated
Storage:	Store at -20°C as received.
Stability:	Stable for 12 months from date of receipt.
Gene Name:	insulin induced gene 1
Database Link:	<a href="#">NP_938150</a> <a href="#">Entrez Gene 64194 Rat</a> <a href="#">Entrez Gene 231070 Mouse</a> <a href="#">Entrez Gene 3638 Human</a> <a href="#">O15503</a>
Background:	Insulin-induced gene (InSig) localizes in the endoplasmic reticulum(ER) and is highly expressed in the liver and fibroblast cell lines. InSig1 and InSig2 play important roles in the regulation of cholesterol biosynthesis. Sterol induces InSig1 binding to the sterol-sensing domain of SREBP cleavage-activating protein (SCAP). Both InSig1 and Insig2 prevent the export of SCAP from the ER and thus, inhibit cholesterol synthesis by preventing the proteolytic cleavage of SREBPs by the Golgi enzymes.
Synonyms:	CL-6; CL6
Protein Families:	Druggable Genome, Transmembrane



[View online »](#)

**Product images:**

Western blot analysis of InSig1 expression in Jurkat cell lysate.