

Product datasheet for **TA318982**

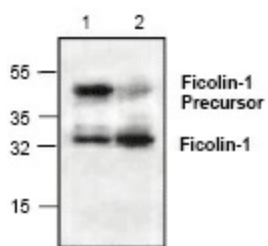
FCN1 Rabbit Polyclonal Antibody

Product data:

Product Type:	Primary Antibodies
Applications:	WB
Recommended Dilution:	WB: 0.5-4 ug/ml
Reactivity:	Human, Mouse, Rat
Host:	Rabbit
Isotype:	IgG
Clonality:	Polyclonal
Immunogen:	Synthetic peptide surrounding amino acid 320 of rat Ficolin-1
Formulation:	100 µg (0.5 mg/ml) affinity purified rabbit polyclonal antibody in phosphate-buffered saline (PBS) containing 30% glycerol, 0.5% BSA, and 0.01% thimerosal.
Concentration:	lot specific
Purification:	Affinity purified
Conjugation:	Unconjugated
Storage:	Store at -20°C as received.
Stability:	Stable for 12 months from date of receipt.
Gene Name:	ficolin 1
Database Link:	NP_001994 Entrez Gene 2219 Human O00602
Background:	Ficolin-1 also known as M-Ficolin is a pattern recognition molecule of the lectin complement activation pathway. It is expressed mostly in monocytes, neutrophils and in type II alveolar epithelial cells. Ficolin-1 is detected on the surface of circulating monocytes but is not present in the plasma. Ficolin-1 has a 28 aa signal sequence, an N-terminal collagen domain and a C-terminal fibrinogen-like (FBG) domain that contain a calcium binding site and a potential N-glycosylation site.
Synonyms:	FCNM
Protein Families:	Druggable Genome, Secreted Protein



[View online »](#)

Product images:

Western blot analysis of Ficolin-1 in 3T3 cell lysate (Lane 1) and rat kidney tissue lysate (Lane 4).