

Product datasheet for **TA318978**

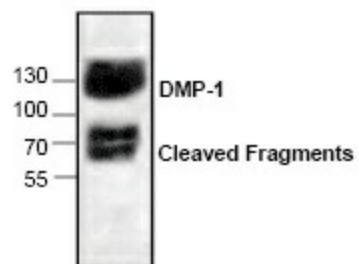
DMP1 Rabbit Polyclonal Antibody

Product data:

Product Type:	Primary Antibodies
Applications:	WB
Recommended Dilution:	WB: 0.5-4 ug/ml
Reactivity:	Human, Mouse, Rat
Host:	Rabbit
Isotype:	IgG
Clonality:	Polyclonal
Immunogen:	Synthetic peptide corresponding to residues surrounding amino acids 21 of rat DMP-1
Formulation:	100 µg (0.5 mg/ml) affinity purified rabbit anti-DMP-1 polyclonal antibody in phosphate buffered saline (PBS), pH 7.2, containing 30% glycerol, 0.5% BSA, 0.01% thimerosal.
Concentration:	lot specific
Purification:	Affinity purified
Conjugation:	Unconjugated
Storage:	Store at -20°C as received.
Stability:	Stable for 12 months from date of receipt.
Gene Name:	dentin matrix acidic phosphoprotein 1
Database Link:	NP_001073380 Entrez Gene 13406 Mouse Entrez Gene 25312 Rat Entrez Gene 1758 Human Q13316
Background:	DMP-1 (Dentin matrix protein1) is a member of the integrin ligand N-linked glycoprotein family. It is mostly found in bone, tooth and hypertrophic cartilage. DMP-1 plays an important role in dentin and bone mineralization. DMP-1 has multiple serine, glutamic acid and aspartic acid residues, a GAG attachment site and RGD motif. DMP-1 is proteolytically processed into multiple fragments in the extracellular matrix (ECM) of bone and dentin.
Synonyms:	ARHP; ARHR; DMP-1
Protein Families:	Secreted Protein



[View online »](#)

Product images:

Western blot analysis of DMP-1 in rat kidney tissue lysate.