

Product datasheet for **TA318975**

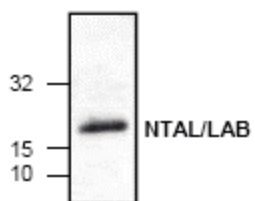
NTAL (LAT2) Rabbit Polyclonal Antibody

Product data:

Product Type:	Primary Antibodies
Applications:	WB
Recommended Dilution:	WB: 0.5-4 ug/ml
Reactivity:	Rat
Host:	Rabbit
Isotype:	IgG
Clonality:	Polyclonal
Immunogen:	Synthetic peptide surrounding amino acid 187 of rat NTAL
Formulation:	100 µg (0.5 mg/ml) affinity purified rabbit polyclonal antibody in phosphate buffered saline (PBS), pH 7.2, containing 30% glycerol, 0.5% BSA, 0.01% thimerosal.
Concentration:	lot specific
Purification:	Affinity purified
Conjugation:	Unconjugated
Storage:	Store at -20°C as received.
Stability:	Stable for 12 months from date of receipt.
Gene Name:	linker for activation of T-cells family member 2
Database Link:	NP_054865 Entrez Gene 317676 Rat Q9GZY6
Background:	Non-T cell Activation Linker (NTAL) is also known as linker for activation of B cells (LAB), is a transmembrane adaptor protein. NTAL is expressed in B cells, mast cells, monocytes and NK cells. When NTAL is tyrosine phosphorylated, it recruits signalling molecules such as Grb2, Gab2 and c-Cbl into receptor-signalling complexes. Mutation in the NTAL gene may cause Williams-Beuren syndrome, a rare genetic disorder.
Synonyms:	HSPC046; LAB; NTAL; WBSCR5; WBSCR15; WSCR5
Protein Families:	Transmembrane



[View online »](#)

Product images:

Western blot analysis of NTAL expression in rat kidney tissue lysate.