

Product datasheet for **TA318972**

Estrogen Sulfotransferase (SULT1E1) Rabbit Polyclonal Antibody

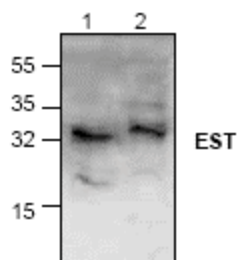
Product data:

Product Type:	Primary Antibodies
Applications:	WB
Recommended Dilution:	WB: 0.5-4 ug/ml
Reactivity:	Human, Rat
Host:	Rabbit
Isotype:	IgG
Clonality:	Polyclonal
Immunogen:	Synthetic peptide surrounding amino acid 195 of human Estrogen Sulfotransferase (EST)
Formulation:	100 µg (0.5 mg/ml) affinity purified rabbit anti- Estrogen Sulfotransferase polyclonal antibody in phosphate buffered saline (PBS), pH 7.2, containing 30% glycerol, 0.5% BSA, 0.01% thimerosal.
Concentration:	lot specific
Purification:	Affinity purified
Conjugation:	Unconjugated
Storage:	Store at -20°C as received.
Stability:	Stable for 12 months from date of receipt.
Gene Name:	sulfotransferase family 1E member 1
Database Link:	NP_005411 Entrez Gene 360268 RatEntrez Gene 25355 RatEntrez Gene 6783 Human P49888
Background:	Mammalian EST sulfurylates the hydroxyl group of estrogenic steroids by transferring the sulfate from a cosubstrate adenosine 3'-phosphate-5'-phosphosulfate. Sulfurylated steroids do not bind to the estrogen receptor with high affinity and, therefore, are hormonally inactive. EST plays an important role in controlling the intracellular level of the receptor-active estrogens.
Synonyms:	EST; EST-1; ST1E1; STE
Protein Pathways:	Androgen and estrogen metabolism, Sulfur metabolism



[View online »](#)

Product images:



Western blot analysis of Estrogen Sulfotransferase (EST) with Jurkat cell lysates (Lane 1, 2).