

Product datasheet for **TA318969**

SOX1 Rabbit Polyclonal Antibody

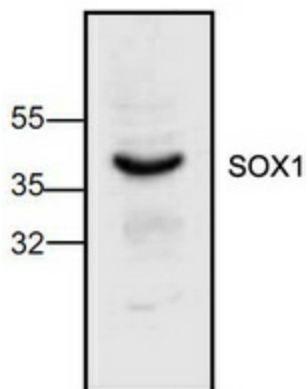
Product data:

Product Type:	Primary Antibodies
Applications:	WB
Recommended Dilution:	WB: 0.5-4 µg/ml
Reactivity:	Human, Mouse, Rat
Host:	Rabbit
Isotype:	IgG
Clonality:	Polyclonal
Immunogen:	Synthetic peptide corresponding to residues surrounding amino acids 322 of mouse Sox-1
Formulation:	100 µg (0.5 mg/ml) affinity purified rabbit anti-Sox-1 polyclonal antibody in phosphate buffered saline (PBS), pH 7.2, containing 30% glycerol, 0.5% BSA, 0.01% thimerosal.
Concentration:	lot specific
Purification:	Affinity purified
Conjugation:	Unconjugated
Storage:	Store at -20°C as received.
Stability:	Stable for 12 months from date of receipt.
Gene Name:	SRY-box 1
Database Link:	NP_005977 Entrez Gene 20664 Mouse Entrez Gene 100912302 Rat Entrez Gene 6656 Human O00570
Background:	Sox proteins are related to mammalian sex determining gene that encodes DNA-binding protein. About 30 SOX family proteins have been identified. Sox-1 is a transcription factor that is found in the embryonic nervous system. Sox-1 maintains neural cells in an undifferentiated state and has been used as a marker for neural stem cells.
Synonyms:	SRY (sex determining region Y)-box 1; SRY-related HMG-box gene 1
Protein Families:	Adult stem cells, ES Cell Differentiation/IPS, Induced pluripotent stem cells, Transmembrane



[View online »](#)

Product images:



Western blot analysis of Sox-1 expression in Jurkat cell lysate.