

Product datasheet for **TA318966**

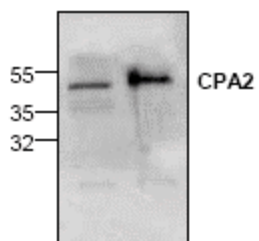
Carboxypeptidase A2 (CPA2) Rabbit Polyclonal Antibody

Product data:

Product Type:	Primary Antibodies
Applications:	WB
Recommended Dilution:	WB: 0.5-4 ug/ml
Reactivity:	Human, Mouse, Rat
Host:	Rabbit
Isotype:	IgG
Clonality:	Polyclonal
Immunogen:	Synthetic peptide corresponding to residues surrounding amino acids 194 of mouse Carboxypeptidase A2
Formulation:	100 µg (0.5 mg/ml) affinity purified rabbit anti-Carboxypeptidase A2 polyclonal antibody in phosphate-buffered saline (PBS) containing 30% glycerol, 0.5% BSA, and 0.01% thimerosal.
Concentration:	lot specific
Purification:	Affinity purified
Conjugation:	Unconjugated
Storage:	Store at -20°C as received.
Stability:	Stable for 12 months from date of receipt.
Gene Name:	carboxypeptidase A2
Database Link:	AAH07009 Entrez Gene 232680 Mouse Entrez Gene 296959 Rat Entrez Gene 1358 Human P48052
Background:	Carboxypeptidase A2 is a pancreatic peptidase that comes from the precursor form of inactive procarboxypeptidase. This enzyme cleaves the C-terminal of protein with aromatic side chains or branched hydrocarbon chains.
Synonyms:	carboxypeptidase A2 (pancreatic)
Protein Families:	Druggable Genome, Protease, Secreted Protein



[View online »](#)

Product images:

Western blot analysis of CPA2 in Jurkat cells lysate (Lane 1, 2).