

## Product datasheet for **TA318963**

### Lamin B1 (LMNB1) Rabbit Polyclonal Antibody

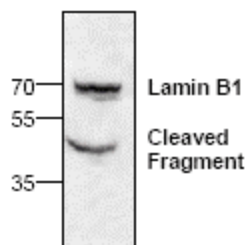
#### Product data:

Product Type:	Primary Antibodies
Applications:	WB
Recommended Dilution:	WB: 0.5-4 ug/ml
Reactivity:	Human, Mouse, Rat
Host:	Rabbit
Isotype:	IgG
Clonality:	Polyclonal
Immunogen:	Synthetic peptide surrounding amino acid 572 of mouse Lamin B1
Formulation:	100 µg (0.5 mg/ml) affinity purified rabbit polyclonal antibody in phosphate buffered saline (PBS), pH 7.2, containing 30% glycerol, 0.5% BSA, 0.01% thimerosal.
Concentration:	lot specific
Purification:	Affinity purified
Conjugation:	Unconjugated
Storage:	Store at -20°C as received.
Stability:	Stable for 12 months from date of receipt.
Gene Name:	lamin B1
Database Link:	<a href="#">NP_001185486</a> <a href="#">Entrez Gene 16906 Mouse</a> <a href="#">Entrez Gene 116685 Rat</a> <a href="#">Entrez Gene 4001 Human</a> <a href="#">P20700</a>
Background:	Catalase is known marker for peroxisomes. It is the most abundant protein in the peroxisomes. It is present in all aerobically respiring organisms. It protects cells from the toxicity of hydrogen peroxide.
Synonyms:	ADLD; LMN; LMN2; LMNB



[View online »](#)

## Product images:



Western blot analysis of Lamin B1 expression in 3T3 cell lysate.