

Product datasheet for **TA318958**

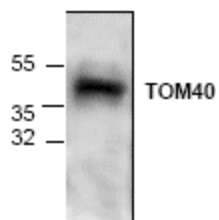
TOMM40 Rabbit Polyclonal Antibody

Product data:

Product Type:	Primary Antibodies
Applications:	WB
Recommended Dilution:	WB: 0.5-4 ug/ml
Reactivity:	Human, Mouse, Rat
Host:	Rabbit
Isotype:	IgG
Clonality:	Polyclonal
Immunogen:	Synthetic peptide surrounding amino acid 339 of human TOM40
Formulation:	100 µg (0.5 mg/ml) purified rabbit polyclonal antibody in phosphate-buffered saline (PBS) containing 30% glycerol, 0.5% BSA and 0.01% thimerosal.
Concentration:	lot specific
Purification:	Affinity purified
Conjugation:	Unconjugated
Storage:	Store at -20°C as received.
Stability:	Stable for 12 months from date of receipt.
Gene Name:	translocase of outer mitochondrial membrane 40
Database Link:	NP_006105 Entrez Gene 53333 Mouse Entrez Gene 308416 Rat Entrez Gene 10452 Human O96008
Background:	Translocase of the mitochondria Outer Membrane (TOM) is essential for protein import into mitochondria. TOM40 is synthesized in the cytosol and contains information for its mitochondrial targeting and assembly. It is delivered to the mitochondria in an ATP-dependent manner.
Synonyms:	C19orf1; D19S1177E; PER-EC1; PEREC1; TOM40
Protein Families:	Druggable Genome, Ion Channels: Other
Protein Pathways:	Amyotrophic lateral sclerosis (ALS)



[View online »](#)

Product images:

Western blot analysis of TOM40 expression in mouse small intestine tissue lysate.