

Product datasheet for **TA318953**

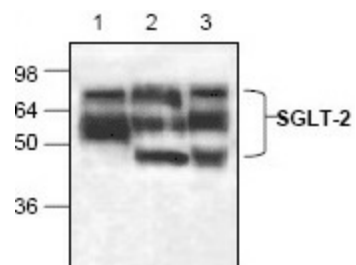
SGLT2 (SLC5A2) Rabbit Polyclonal Antibody

Product data:

Product Type:	Primary Antibodies
Applications:	WB
Recommended Dilution:	WB: 0.5-4 µg/ml
Reactivity:	Human, Mouse, Rat
Host:	Rabbit
Isotype:	IgG
Clonality:	Polyclonal
Immunogen:	Synthetic peptide near the N-terminus of mouse SGLT-2
Formulation:	100 µg (0.2 mg/ml) protein A affinity purified rabbit polyclonal antibody in phosphate-buffered saline (PBS) containing 30% glycerol, 0.5% BSA, and 0.01% thimerosal.
Concentration:	lot specific
Purification:	Affinity purified
Conjugation:	Unconjugated
Storage:	Store at -20°C as received.
Stability:	Stable for 12 months from date of receipt.
Gene Name:	solute carrier family 5 member 2
Database Link:	NP_003032 Entrez Gene 64522 Rat Entrez Gene 246787 Mouse Entrez Gene 6524 Human P31639
Background:	Sodium glucose co transporters (SGLTs) are located in the brush-border membrane, but transported out of the cell across the basolateral membranes by a facilitated sugar transporter (GLUT). At least three members of SGLTs (SGLT 1-3) have been cloned and characterized. SGLTs transport a methyl-D-glucoside (α-MDG), a non-metabolized model substrate, in Na-dependent manner. SGLT-1 does not discriminate α-MDG, glucose, and galactose. SGLT2/3 do not transport D-galactose efficiently.
Synonyms:	SGLT2
Protein Families:	Transmembrane



[View online »](#)

Product images:

Western blot analysis of SGLT-2 in lysate from Jurkat cells (Lane 1), mouse small intestine (Lane 2) and rat kidney (Lane 3).