

Product datasheet for **TA318951**

Dishevelled 3 (DVL3) Rabbit Polyclonal Antibody

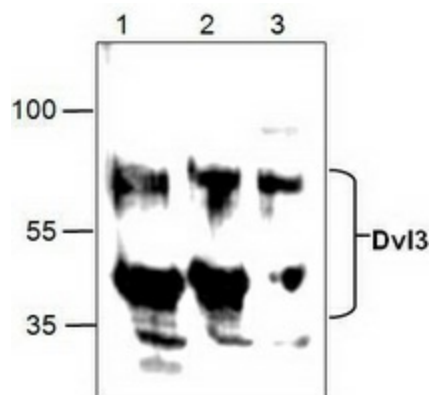
Product data:

Product Type:	Primary Antibodies
Applications:	WB
Recommended Dilution:	WB: 0.5-4 µg/ml
Reactivity:	Human, Mouse, Rat
Host:	Rabbit
Isotype:	IgG
Clonality:	Polyclonal
Immunogen:	Synthetic peptide surrounding amino acid 583 of mouse Dvl3
Formulation:	100 µg (0.5 mg/ml) peptide affinity purified rabbit polyclonal antibody in phosphate-buffered saline (PBS) containing 30% glycerol, 0.5% BSA, and 0.01% thimerosal.
Concentration:	lot specific
Purification:	Affinity purified
Conjugation:	Unconjugated
Storage:	Store at -20°C as received.
Stability:	Stable for 12 months from date of receipt.
Gene Name:	dishevelled segment polarity protein 3
Database Link:	NP_004414 Entrez Gene 13544 Mouse Entrez Gene 303811 Rat Entrez Gene 1857 Human Q92997
Background:	Dvl1, Dvl2, and Dvl3 are mammalian homologs of Dsh (disheveled) proteins that are involved in Wnt signaling pathways. Upon treatment with Wnt proteins, Dvls become hyperphosphorylated and accumulate in the nucleus. Dvls have been reported to mediate endocytosis and may also play a role in certain cancers.
Synonyms:	DRS3
Protein Families:	Druggable Genome, ES Cell Differentiation/IPS
Protein Pathways:	Basal cell carcinoma, Colorectal cancer, Melanogenesis, Notch signaling pathway, Pathways in cancer, Wnt signaling pathway



[View online »](#)

Product images:



Western blot analysis of Dvl3 in Jurkat cell lysate (Lane 1 & 2) and 3T3 cell lysate (Lane 3).