

## Product datasheet for **TA318950**

### **BIN1 Rabbit Polyclonal Antibody**

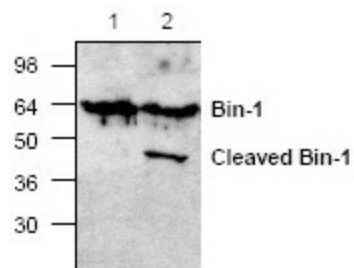
#### **Product data:**

<b>Product Type:</b>	Primary Antibodies
<b>Applications:</b>	WB
<b>Recommended Dilution:</b>	WB: 0.5-4 ug/ml
<b>Reactivity:</b>	Human, Mouse, Rat
<b>Host:</b>	Rabbit
<b>Isotype:</b>	IgG
<b>Clonality:</b>	Polyclonal
<b>Immunogen:</b>	Synthetic peptide corresponding to residues surrounding amino acids 578 of mouse BIN-1
<b>Formulation:</b>	100 µg (0.2mg/ml) immunoaffinity purified rabbit anti-Bin-1 polyclonal antibody in phosphate-buffered saline (PBS) containing 0.1% BSA, 30% glycerol, and 0.01% thimerosal.
<b>Concentration:</b>	lot specific
<b>Purification:</b>	Affinity purified
<b>Conjugation:</b>	Unconjugated
<b>Storage:</b>	Store at -20°C as received.
<b>Stability:</b>	Stable for 12 months from date of receipt.
<b>Gene Name:</b>	bridging integrator 1
<b>Database Link:</b>	<a href="#">NP_004296</a> <a href="#">Entrez Gene 30948 Mouse</a> <a href="#">Entrez Gene 117028 Rat</a> <a href="#">Entrez Gene 274 Human</a> <a href="#">O00499</a>
<b>Background:</b>	BIN-1 is a tumor suppressor protein that was identified in a genetic screen for proteins that interact with the MCY oncoprotein. BIN-1 inhibits the oncogenic activity of MYC, possibly through activating or facilitating apoptosis. BIN is a short-lived protein with a half-life of about 2 hours.
<b>Synonyms:</b>	AMPH2; AMPHL; SH3P9



[View online »](#)

## Product images:



Western blot analysis of BIN-1 expression in Jurkat cells treated with (Lane 2) or without (Lane 1) camptothecin.