

Product datasheet for **TA318949**

Bcl rambo (BCL2L13) Rabbit Polyclonal Antibody

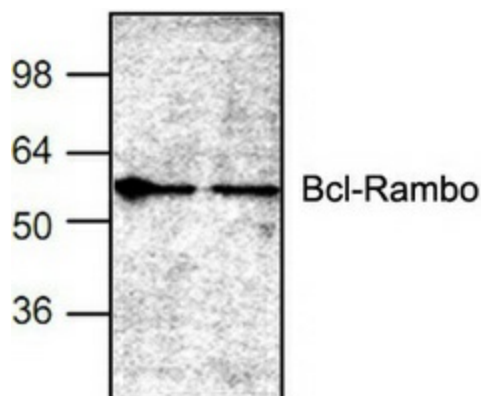
Product data:

Product Type:	Primary Antibodies
Applications:	WB
Recommended Dilution:	WB: 0.5-4 ug/ml
Reactivity:	Human, Mouse, Rat
Host:	Rabbit
Isotype:	IgG
Clonality:	Polyclonal
Immunogen:	Synthetic peptide corresponding to residues surrounding amino acids 421 of Mouse Bcl-rambo
Formulation:	100 µg (0.2mg/ml) affinity purified rabbit anti-Bcl-rambo polyclonal antibody in phosphate-buffered saline (PBS) containing 0.1% BSA, 30% glycerol, and 0.01% thimerosal.
Concentration:	lot specific
Purification:	Affinity purified
Conjugation:	Unconjugated
Storage:	Store at -20°C as received.
Stability:	Stable for 12 months from date of receipt.
Gene Name:	BCL2 like 13
Database Link:	NP_001257655 Entrez Gene 94044 Mouse Entrez Gene 312682 Rat Entrez Gene 23786 Human Q9BXX5
Background:	Bcl-rambo shares the common structural characteristics with other members of the anti-apoptotic Bcl-2 family members, but differs from them at its C-terminus, where a 250 amino acid sequence proceeds the membrane anchor region. It also differs from other pro-apoptotic Bcl-2 family members in that its membrane anchor C-terminus region is responsible for its apoptotic activity, not its Bcl-2 homology motifs.
Synonyms:	BCL-RAMBO; Bcl2-L-13; MIL1
Protein Families:	Druggable Genome, Transmembrane



[View online »](#)

Product images:



Western blot analysis of Bcl-rambo expression in Jurkat cell lysate.