

Product datasheet for **TA318948**

MADH7 (SMAD7) Rabbit Polyclonal Antibody

Product data:

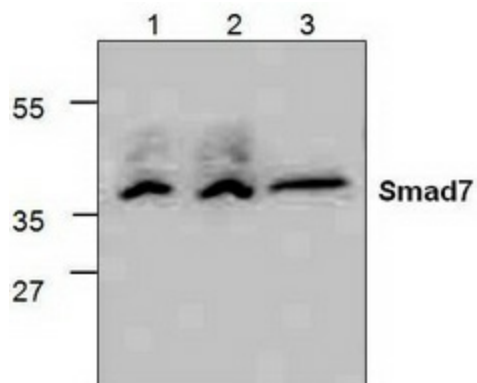
Product Type:	Primary Antibodies
Applications:	WB
Recommended Dilution:	WB: 0.5-4 ug/ml
Reactivity:	Human, Mouse, Rat
Host:	Rabbit
Isotype:	IgG
Clonality:	Polyclonal
Immunogen:	Synthetic peptide from human Smad 7
Formulation:	100 µg (0.5 mg/ml) affinity purified rabbit anti-Smad7 polyclonal antibody in phosphate-buffered saline (PBS) containing 30% glycerol, 0.5% BSA, and 0.01% thimerosal.
Concentration:	lot specific
Purification:	Affinity purified
Conjugation:	Unconjugated
Storage:	Store at -20°C as received.
Stability:	Stable for 12 months from date of receipt.
Gene Name:	SMAD family member 7
Database Link:	NP_005895 Entrez Gene 17131 Mouse Entrez Gene 81516 Rat Entrez Gene 4092 Human O15105
Background:	Smad proteins, the mammalian homologs of the Drosophila Mothers against dpp (Mad), have been implicated as downstream effectors of TGFβ/BMP signaling. Smad1, Smad5, and Smad8 are effectors of BMP2 and BMP4 function while Smad2 and Smad3 are involved in TGF-β and activin-mediated growth modulation. Smad4 has been shown to mediate all of the above activities through interaction with various Smad family members. Smad6 and Smad7 regulate the response to activin/TGFβ signaling by interfering with TGFβ-mediated phosphorylation of other Smad family members.
Synonyms:	CRCS3; MADH7; MADH8
Protein Families:	Druggable Genome, Transcription Factors



[View online »](#)

Protein Pathways: TGF-beta signaling pathway

Product images:



Western blot analysis of Smad7 expression in Jurkat cell lysate (Lane 1 & 2) and 3T3 cell lysate (Lane 3).