

## Product datasheet for **TA318947**

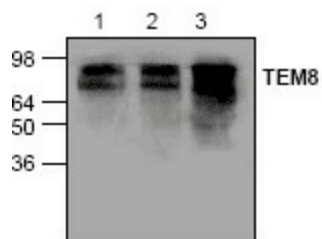
### TEM8 (ANTXR1) Rabbit Polyclonal Antibody

#### Product data:

Product Type:	Primary Antibodies
Applications:	WB
Recommended Dilution:	WB: 0.5-4 ug/ml
Reactivity:	Human, Mouse, Rat
Host:	Rabbit
Isotype:	IgG
Clonality:	Polyclonal
Immunogen:	Synthetic peptide corresponding to residues surrounding amino acids 484 of Mouse TEM8
Formulation:	100 µg (0.2mg/ml) affinity purified rabbit anti-TEM8/ATR1 polyclonal antibody in phosphate-buffered saline (PBS) containing 0.5% BSA, 30% glycerol, and 0.01% thimerosal.
Concentration:	lot specific
Purification:	Affinity purified
Conjugation:	Unconjugated
Storage:	Store at -20°C as received.
Stability:	Stable for 12 months from date of receipt.
Gene Name:	anthrax toxin receptor 1
Database Link:	<a href="#">NP_060623</a> <a href="#">Entrez Gene 69538 Mouse</a> <a href="#">Entrez Gene 362393 Rat</a> <a href="#">Entrez Gene 84168 Human</a> <a href="#">Q9H6X2</a>
Background:	Tumor Endothelial Markers (TEMs, TEM 1-9) are recently identified genes, whose expression is elevated in tumor-associated endothelium. TEMs are barely detectable in normal endothelial cells. TEM8 has been shown to interact with C5 domain of collagen α3(VI), a protein also preferentially expressed in tumor endothelium. It is thought that TEM8 may play a role in tumor angiogenesis.
Synonyms:	ATR; GAPO; TEM8
Protein Families:	Druggable Genome, Transmembrane



[View online »](#)

**Product images:**

Western blot analysis of TEM8 using lysates from rat kidney (Lane 1), mouse small intestine (Lane 2), and Jurkat cells (Lane 3).