

## Product datasheet for **TA318946**

### FKBP38 (FKBP8) Rabbit Polyclonal Antibody

#### Product data:

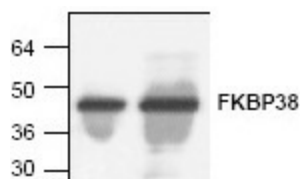
|                       |   |
|-----------------------|---|
| Product Type:         | Primary Antibodies  |
| Applications:         | WB  |
| Recommended Dilution: | WB: 0.5-4ug/ml  |
| Reactivity:           | Human, Mouse, Rat   |
| Host:                 | Rabbit  |
| Isotype:              | IgG   |
| Clonality:            | Polyclonal  |
| Immunogen:            | Synthetic peptide surrounding amino acid 344 of mouse FKBP38  |
| Formulation:          | 100 µg (0.2mg/ml) protein A purified rabbit anti-FKBP38 polyclonal antibody in phosphate-buffered saline (PBS) containing 0.1% BSA, 20% glycerol, and 0.02% thimerosal.   |
| Concentration:        | lot specific  |
| Purification:         | Affinity purified   |
| Conjugation:          | Unconjugated  |
| Storage:              | Store at -20°C as received.   |
| Stability:            | Stable for 12 months from date of receipt.  |
| Gene Name:            | FK506 binding protein 8   |
| Database Link:        | <a href="#">NP_036313</a><br><a href="#">Entrez Gene 14232 Mouse</a> <a href="#">Entrez Gene 290652 Rat</a> <a href="#">Entrez Gene 23770 Human</a><br><a href="#">Q14318</a>   |
| Background:           | FK506-binding protein 38 (FKBP38), a member of the immunophilin family, has been implicated to play an important role in apoptosis through its involvement in the mechanism that targets Bcl-2 and Bcl-xL to the outer mitochondrial membrane (OMM). Suppression of endogenous FKBP38 by RNAi or transfection of a mutant FKBP38 missing the transmembrane domain necessary for mitochondrial insertion, resulted in the translocation of Bcl-2 and Bcl-xL from the OMM to the cytosol. It has also been suggested that FKBP38 may play a role in the cross-talk between the Bcl-2 and the Calcineurin/NF-AT apoptosis signaling pathways and in cell size regulation through interactions with tuberous sclerosis genes. |
| Synonyms:             | FKBP38; FKBP38  |



[View online »](#)

Protein Families: Druggable Genome, Transmembrane

### Product images:



Western blot analysis of FKBP-38 with mouse intestine tissue lysate (left lane) and Jurkat cell lysate (Right lane).