

Product datasheet for **TA318944**

JIP1 (MAPK8IP1) Rabbit Polyclonal Antibody

Product data:

Product Type:	Primary Antibodies
Applications:	WB
Recommended Dilution:	WB: 0.5-4ug/ml
Reactivity:	Human, Mouse, Rat
Host:	Rabbit
Isotype:	IgG
Clonality:	Polyclonal
Immunogen:	Synthetic peptide from mouse JIP1
Formulation:	100µg (0.2mg/ml) protein A purified rabbit anti-JIP1 polyclonal antibody in phosphate-buffered saline (PBS) containing 0.5% BSA, 30% glycerol, and 0.01% thimerosal.
Concentration:	lot specific
Purification:	Affinity purified
Conjugation:	Unconjugated
Storage:	Store at -20°C as received.
Stability:	Stable for 12 months from date of receipt.
Gene Name:	mitogen-activated protein kinase 8 interacting protein 1
Database Link:	NP_005447 Entrez Gene 19099 Mouse Entrez Gene 116457 Rat Entrez Gene 9479 Human Q9UQF2
Background:	JIP1 (JNK-interacting protein-1) is a cytoplasmic protein that possesses an N-terminal JNK-binding domain and a C-terminal SRC homology 3 (SH3) domain. JIP1 selectively bind to JNK, but not to the ERK or p38 MAP kinases. In addition to JNK, JIP1 binds to specific proteins of JNK pathways, including MKK7, MLK3, and DLK, all at separate binding sites. JIP1 has been identified in brain and kidney tissues, whereas JIP2a, JIP2b, and JIP3 are specifically expressed in the brain. Overexpression of JIP1 causes cytoplasmic retention of JNK, thereby preventing its nuclear accumulation and the subsequent activation of the JNK pathways, indicating that JIP1 acts as a cytoplasmic anchor for JNK.
Synonyms:	IB1; JIP-1; JIP1; PRKM8IP

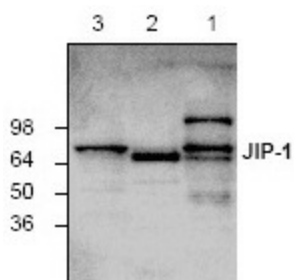


[View online »](#)

Protein Families: Druggable Genome

Protein Pathways: MAPK signaling pathway

Product images:



Western blot analysis of JIP-1 in Jurkat cell lysate (Lane 1), mouse intestine (Lane 2) and rat kidney (Lane 3) tissue lysates.