

## Product datasheet for **TA318942**

### EMR2 (ADGRE2) Rabbit Polyclonal Antibody

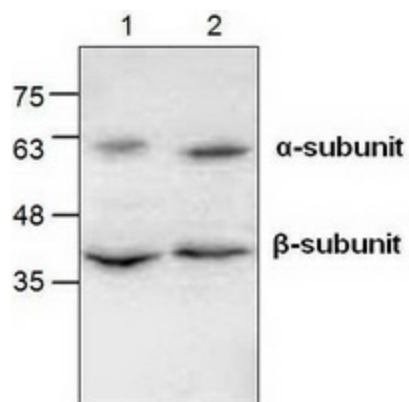
#### Product data:

Product Type:	Primary Antibodies
Applications:	WB
Recommended Dilution:	WB: 1-4 ug/ml
Reactivity:	Human
Host:	Rabbit
Isotype:	IgG
Clonality:	Polyclonal
Immunogen:	Synthetic peptide surrounding amino acid 790 of human EMR2.
Formulation:	100 µg (0.5 mg/ml) affinity purified rabbit anti- EMR2 polyclonal antibody in phosphate buffered saline (PBS), pH 7.2, containing 30% glycerol, 0.5% BSA, 5 mM EDTA and 0.01% thimerosal.
Concentration:	lot specific
Purification:	Affinity purified
Conjugation:	Unconjugated
Storage:	Store at -20°C as received.
Stability:	Stable for 12 months from date of receipt.
Gene Name:	adhesion G protein-coupled receptor E2
Database Link:	<a href="#">NP_690885</a> <a href="#">Entrez Gene 30817 Human</a> <a href="#">Q9UHX3</a>
Background:	EGF-like module-containing mucin-like receptor 2 (EMR2) is a member of the class B seven-span transmembrane (TM7) receptor family. EMR2 is expressed predominantly by cells of the immune system such as leukocytes. EMR2 is proteolytically cleaved into two subunits: a seven-transmembrane subunit, and an extracellular a subunit.
Synonyms:	CD312
Protein Families:	Druggable Genome, GPCR, Transmembrane



[View online »](#)

## Product images:



Western blot analysis of EMR2 in Jurkat cell lysate (Lane 1 & 2).