

Product datasheet for **TA318937**

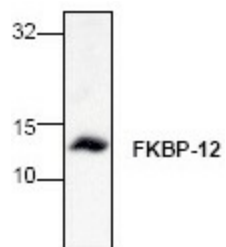
FKBP12 (FKBP1A) Rabbit Polyclonal Antibody

Product data:

Product Type:	Primary Antibodies
Applications:	WB
Recommended Dilution:	WB: 0.5-4 ug/ml, IHC: 2-10ug/ml, IP: 2-10ug/ml
Reactivity:	Human, Mouse, Rat
Host:	Rabbit
Isotype:	IgG
Clonality:	Polyclonal
Immunogen:	Synthetic peptide surrounding amino acid 10 of mouse FKBP12
Formulation:	100 µg (0.5 mg/ml) in phosphate buffered saline (PBS), pH 7.2, containing 30% glycerol, 0.5% BSA, 0.01% thimerosal.
Concentration:	lot specific
Purification:	Affinity purified
Conjugation:	Unconjugated
Storage:	Store at -20°C as received.
Stability:	Stable for 12 months from date of receipt.
Gene Name:	FK506 binding protein 1A
Database Link:	NP_000792 Entrez Gene 14225 Mouse Entrez Gene 25639 Rat Entrez Gene 2280 Human P62942
Background:	FKBP12 is a member of the family of soluble receptors capable of binding to one of two major immunosuppressant agents. FKBP12 also plays a role in intracellular calcium regulation by associating with three types of calcium release channel complexes, cardiac and skeletal ryanodine receptors and the inositol 1,4,5-trisphosphate receptor. In interactions with members of the TGF beta family type I receptors, FKBP12 has been shown to exert an inhibitory effect on the signaling pathway.
Synonyms:	FKBP-1A; FKBP-12; FKBP1; FKBP12; PKC12; PKCI2; PPIASE
Protein Families:	Druggable Genome



[View online »](#)

Product images:

Western blot analysis of FKBP12 expression in rat kidney tissue lysate.