

## Product datasheet for **TA318935**

### CD62L (SELL) Rabbit Polyclonal Antibody

#### Product data:

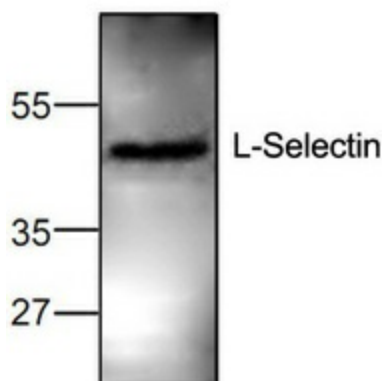
Product Type:	Primary Antibodies
Applications:	WB
Recommended Dilution:	WB: 0.5-4 ug/ml, IHC: 10-20ug/ml, IP: 10-20ug/ml
Reactivity:	Human, Mouse, Rat
Host:	Rabbit
Isotype:	IgG
Clonality:	Polyclonal
Immunogen:	Synthetic peptide surrounding amino acid 69 of human L-Selectin
Formulation:	100 µg (0.5mg/ml) protein A purified rabbit anti-L-Selectin polyclonal antibody in phosphate-buffered saline (PBS) containing 30% glycerol, 0.5% BSA, and 0.01% thimerosal.
Concentration:	lot specific
Purification:	Affinity purified
Conjugation:	Unconjugated
Storage:	Store at -20°C as received.
Stability:	Stable for 12 months from date of receipt.
Gene Name:	selectin L
Database Link:	<a href="#">NP_000646</a> <a href="#">Entrez Gene 20343 Mouse</a> <a href="#">Entrez Gene 29259 Rat</a> <a href="#">Entrez Gene 6402 Human</a> <a href="#">P14151</a>
Background:	Selectins are a family of carbohydrate-binding proteins involved in mediating cellular interactions with leukocytes. E-Selectin (also called ELMA-1) expressed on endothelial cells. L-Selectin (also called LECAM-1) is expressed on the majority of B and naïve T cells and on most monocytes, neutrophils and eosinophils. P-Selectin (also called GMP-140) expressed on activated platelets and endothelial cells. Selectins interact with specific carbohydrates expressed by activated endothelial cells, monocytes, and neutrophils.
Synonyms:	CD62L; LAM1; LECAM1; LEU8; LNHR; LSEL; LYAM1; PLNHR; TQ1
Protein Families:	Druggable Genome, ES Cell Differentiation/IPS, Transmembrane



[View online »](#)

Protein Pathways: Cell adhesion molecules (CAMs)

**Product images:**



Western blot analysis of L-Selectin expression in Jurkat cell lysate.