

## Product datasheet for **TA318931**

### H3FB (HIST1H3D) Rabbit Polyclonal Antibody

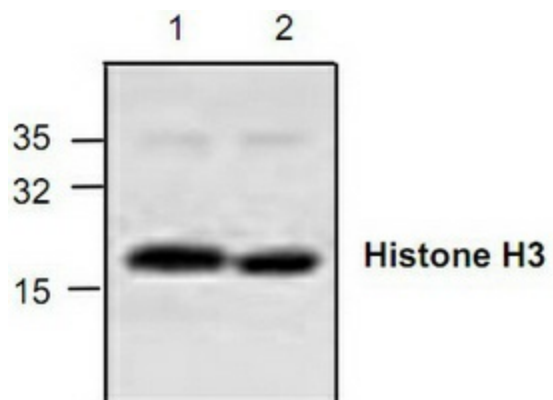
#### Product data:

Product Type:	Primary Antibodies
Applications:	WB
Recommended Dilution:	WB: 0.5-4 ug/ml, IHC: 20ug/ml
Reactivity:	Human, Mouse, Rat
Host:	Rabbit
Isotype:	IgG
Clonality:	Polyclonal
Immunogen:	Synthetic peptide near the C-terminus of human Histone H3
Formulation:	100 µg (0.5 mg/ml) affinity purified rabbit anti-Histone H3 polyclonal antibody in phosphate buffered saline (PBS), pH 7.2, containing 30% glycerol, 0.5% BSA, 0.01% thimerosal.
Concentration:	lot specific
Purification:	Affinity purified
Conjugation:	Unconjugated
Storage:	Store at -20°C as received.
Stability:	Stable for 12 months from date of receipt.
Gene Name:	histone cluster 1, H3d
Database Link:	<a href="#">NP_003521</a> <a href="#">Entrez Gene 319149 Mouse</a> <a href="#">Entrez Gene 8351 Human</a> <a href="#">P68431</a>
Background:	The nucleosome is made up of four core histone proteins (H2A, H2B, H3 and H4) and is the primary building block of chromatin. The N-terminal tail of core histones undergoes different posttranscriptional modification including acetylation, phosphorylation and methylation. These modifications occur in response to cell signal stimuli and have a direct effect on gene expression.
Synonyms:	b; H3; H3FB
Protein Pathways:	Systemic lupus erythematosus



[View online »](#)

## Product images:



Western blot analysis of Histone H3 expression with Jurkat cell lysate.