

Product datasheet for **TA318930**

H2BC21 Rabbit Polyclonal Antibody

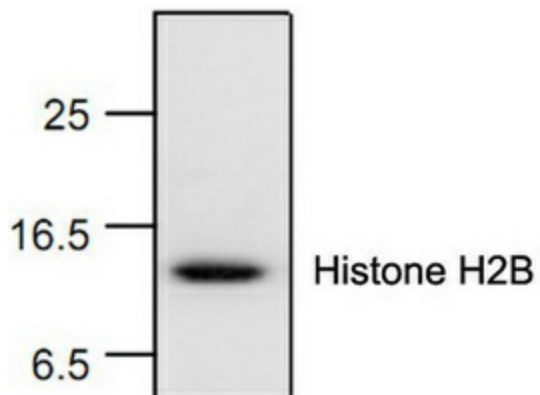
Product data:

Product Type:	Primary Antibodies
Applications:	WB
Recommended Dilution:	WB: 0.5-4 ug/ml, IP: 20-30ug/ml
Reactivity:	Human, Mouse, Rat
Host:	Rabbit
Isotype:	IgG
Clonality:	Polyclonal
Immunogen:	Synthetic peptide corresponding to the N-terminus of human Histone H2B
Formulation:	100 µg (0.5 mg/ml) peptide affinity purified rabbit anti-Histone H2B polyclonal antibody in phosphate buffered saline (PBS), pH 7.2, containing 50% glycerol, 1% BSA, 0.02% thimerosal.
Concentration:	lot specific
Purification:	Affinity purified
Conjugation:	Unconjugated
Storage:	Store at -20°C as received.
Stability:	Stable for 12 months from date of receipt.
Gene Name:	histone cluster 2, H2be
Database Link:	NP_003519 Entrez Gene 319190 Mouse Entrez Gene 295274 Rat Entrez Gene 8349 Human Q16778
Background:	The nucleosome is made up of four core histone proteins (H2A, H2B, H3 and H4) and is the primary building block of chromatin. The N-terminal tail of core histones undergoes different posttranscriptional modification including acetylation, phosphorylation and methylation. These modifications occur in response to cell signal stimuli and have a direct effect on gene expression.
Synonyms:	GL105; H2B; H2B.1; H2BFQ; H2BGL105; H2BQ
Protein Pathways:	Systemic lupus erythematosus



[View online »](#)

Product images:



Western blot analysis of Histone H2B expression with Jurkat cell lysate.