

## Product datasheet for **TA318929**

### H2AC6 Rabbit Polyclonal Antibody

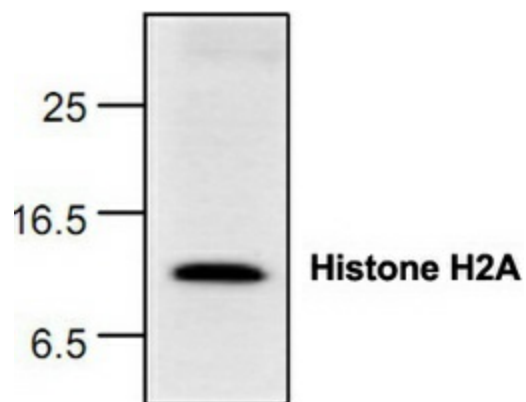
#### Product data:

Product Type:	Primary Antibodies
Applications:	WB
Recommended Dilution:	WB: 0.5-4 ug/ml, IHC: 10-30ug/ml, IP: 10-20ug/ml
Reactivity:	Human, Mouse, Rat
Host:	Rabbit
Isotype:	IgG
Clonality:	Polyclonal
Immunogen:	Synthetic peptide corresponding to the N-terminus of human histone H2A
Formulation:	100 µg (0.5 mg/ml) affinity purified rabbit anti-Histone H2A polyclonal antibody in phosphate buffered saline (PBS), pH 7.2, containing 30% glycerol, 0.5% BSA, 0.01% thimerosal.
Concentration:	lot specific
Purification:	Affinity purified
Conjugation:	Unconjugated
Storage:	Store at -20°C as received.
Stability:	Stable for 12 months from date of receipt.
Gene Name:	histone cluster 1, H2ac
Database Link:	<a href="#">NP_003503</a> <a href="#">Entrez Gene 319164 Mouse</a> <a href="#">Entrez Gene 306962 Rat</a> <a href="#">Entrez Gene 8334 Human</a> <a href="#">Q93077</a>
Background:	The nucleosome is made up of four core histone proteins (H2A, H2B, H3 and H4) and is the primary building block of chromatin. The N-terminal tail of core histones undergoes different posttranscriptional modification including acetylation, phosphorylation and methylation. These modifications occur in response to cell signal stimuli and have a direct effect on gene expression.
Synonyms:	dj221C16.4; H2A; H2AFL; I
Protein Pathways:	Systemic lupus erythematosus



[View online »](#)

## Product images:



Western blot analysis of Histone H2A expression with HeLa nuclear lysate.