

Product datasheet for **TA318927**

HDAC8 Rabbit Polyclonal Antibody

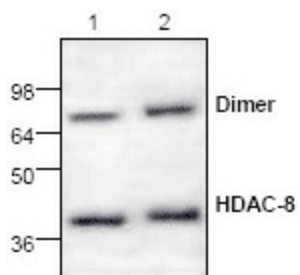
Product data:

Product Type:	Primary Antibodies
Applications:	WB
Recommended Dilution:	WB: 0.5-4 ug/ml, IHC: 10-20ug/ml, IP: 10-20ug/ml
Reactivity:	Human
Host:	Rabbit
Isotype:	IgG
Clonality:	Polyclonal
Immunogen:	Synthetic peptide surrounding amino acid 10 of mouse HDAC-8
Formulation:	100 µg (0.2 mg/ml) protein A purified rabbit polyclonal antibody in phosphate-buffered saline (PBS) containing 30% glycerol, 0.5% BSA, and 0.01% thimerosal.
Concentration:	lot specific
Purification:	Affinity purified
Conjugation:	Unconjugated
Storage:	Store at -20°C as received.
Stability:	Stable for 12 months from date of receipt.
Gene Name:	histone deacetylase 8
Database Link:	NP_001159890 Entrez Gene 55869 Human Q9BY41
Background:	Mammalian HDAC-8, isolated from human kidney, is a member of the histone deacetylase family. HDAC-8 shares homology with other HDACs in the family, but has different tissue distribution. HDAC-8 is localized to the nucleus and plays a role in the tissue development as well as cancer etiology.
Synonyms:	CDA07; CDLS5; HD8; HDACL1; MRXS6; RPD3; WTS
Protein Families:	Druggable Genome, Transcription Factors



[View online »](#)

Product images:



Western blot analysis of HDAC8 with human Jurkat cell lysates