

Product datasheet for **TA318918**

MMP11 Rabbit Polyclonal Antibody

Product data:

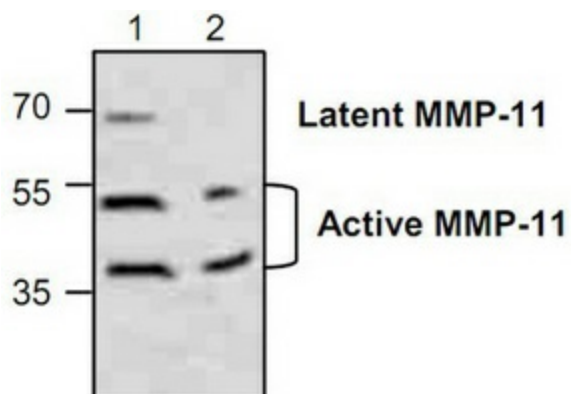
Product Type:	Primary Antibodies
Applications:	WB
Recommended Dilution:	WB: 0.5-4ug/ml
Reactivity:	Human, Mouse, Rat
Host:	Rabbit
Isotype:	IgG
Clonality:	Polyclonal
Immunogen:	Synthetic peptide surrounding amino acid 464 of mouse MMP-11
Formulation:	100 µg (0.5 mg/ml) immunoaffinity purified rabbit polyclonal antibody in phosphate-buffered saline (PBS) containing 30% glycerol, 0.5% BSA, and 0.01% thimerosal.
Concentration:	lot specific
Purification:	Affinity purified
Conjugation:	Unconjugated
Storage:	Store at -20°C as received.
Stability:	Stable for 12 months from date of receipt.
Gene Name:	matrix metalloproteinase 11
Database Link:	NP_005931 Entrez Gene 17385 Mouse Entrez Gene 25481 Rat Entrez Gene 4320 Human P24347
Background:	The matrix metalloproteinases (MMP) are a family of peptidase enzymes responsible for the degradation of extracellular matrix components, including collagen, gelatin, fibronectin, laminin and proteoglycan. Transcription of MMP genes is differentially activated by phorbol ester, lipopolysaccharide (LPS) or staphylococcal enterotoxin B (SEB). MMP catalysis requires both calcium and zinc. MMP-11 is specifically expressed in stromal cells of breast carcinomas and contributes to epithelial cell malignancies. The antibody recognizes the latent form (~68 kDa) and the active forms (~55 kDa and ~40 kDa) of MMP-11 from human, mouse, and rat origins.
Synonyms:	SL-3; ST3; STMY3



[View online »](#)

Protein Families: Druggable Genome, Protease

Product images:



Western blot analysis of MMP-11 in Jurkat cell lysate (Lane 1 & 2).