

## Product datasheet for **TA318917**

### EBP50 (SLC9A3R1) Rabbit Polyclonal Antibody

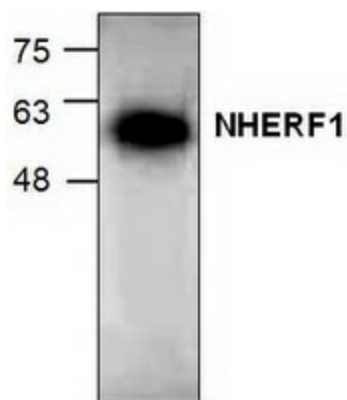
#### Product data:

Product Type:	Primary Antibodies
Applications:	WB
Recommended Dilution:	WB: 1-4 ug/ml
Reactivity:	Human, Mouse, Rat
Host:	Rabbit
Isotype:	IgG
Clonality:	Polyclonal
Immunogen:	Synthetic peptide surrounding amino acid 338of rat NHERF1
Formulation:	100 µg (0.5 mg/ml) affinity purified rabbit anti- NHERF1 polyclonal antibody in phosphate buffered saline (PBS), pH 7.2, containing 30% glycerol, 0.5% BSA, 5 mM EDTA and 0.01% thimerosal.
Concentration:	lot specific
Purification:	Affinity purified
Conjugation:	Unconjugated
Storage:	Store at -20°C as received.
Stability:	Stable for 12 months from date of receipt.
Gene Name:	SLC9A3 regulator 1
Database Link:	<a href="#">NP_004243</a> <a href="#">Entrez Gene 26941 Mouse</a> <a href="#">Entrez Gene 59114 Rat</a> <a href="#">Entrez Gene 9368 Human</a> <a href="#">O14745</a>
Background:	NHE3 regulatory factor 1 (NHERF-1) is a multifunctional adaptor protein that interacts with NHE3 via its PDZ domains. The amino-terminal PDZ domain regulates the dimerization of NHERF-1 in vivo. G protein-coupled receptor kinase 6A phosphorylates NHERF-1 at Ser 289 via a PDZ domain-mediated interaction.
Synonyms:	EBP50; NHERF; NHERF-1; NHERF1; NPHLOP2
Protein Families:	Druggable Genome



[View online »](#)

## Product images:



Western blot analysis of NHERF1 using rat kidney tissue lysate.