

Product datasheet for **TA318910**

TLR3 Rabbit Polyclonal Antibody

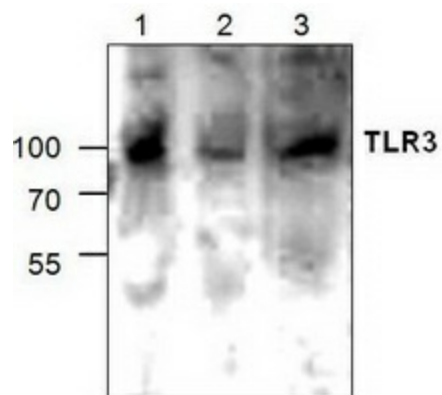
Product data:

Product Type:	Primary Antibodies
Applications:	WB
Recommended Dilution:	WB
Reactivity:	Human, Mouse, Rat
Host:	Rabbit
Isotype:	IgG
Clonality:	Polyclonal
Immunogen:	Synthetic peptide surrounding amino acid 805 of mouse TLR3
Formulation:	PBS, pH 7.2, containing 30% glycerol, 0.5% BSA and 0.01% thimerosal
Concentration:	lot specific
Purification:	Affinity purified
Conjugation:	Unconjugated
Storage:	Store at -20°C as received.
Stability:	Stable for 12 months from date of receipt.
Gene Name:	toll like receptor 3
Database Link:	NP_003256 Entrez Gene 142980 Mouse Entrez Gene 364594 Rat Entrez Gene 7098 Human O15455
Background:	To date, at least ten members of the Toll family have been identified. TLRs recognize molecular patterns associated with microbial pathogens and induce antimicrobial immune response. TLR3 recognizes double-stranded (ds) RNA, induces the activation of NF- κ B, through MyD88-dependent and -independent pathways, and the production of type I interferons (IFNs). Similar to several other members of the TLR family, TLR3 has been reported to be expressed at a very low level on the surface of human fibroblast cell lines.
Synonyms:	CD283; IIAE2
Protein Families:	Druggable Genome, Transmembrane
Protein Pathways:	Toll-like receptor signaling pathway



[View online »](#)

Product images:



Western blot analysis of TLR3 expression in lysate from Jurkat cells (Lane 1 & 2) and 3T3 cells (Lane 3).