

## Product datasheet for **TA318909**

### **NRXN3 Rabbit Polyclonal Antibody**

#### **Product data:**

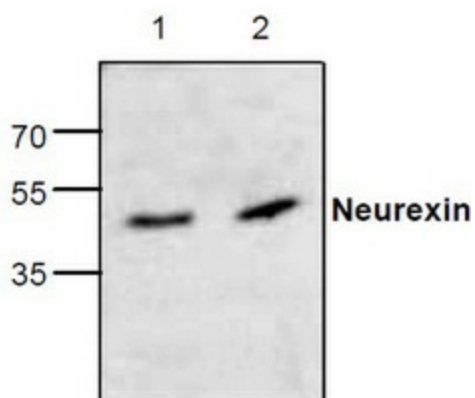
Product Type:	Primary Antibodies
Applications:	WB
Recommended Dilution:	WB: 1:200-1000
Reactivity:	Human, Rat, Bovine
Host:	Rabbit
Isotype:	IgG
Clonality:	Polyclonal
Immunogen:	Synthetic peptide corresponding to residues surrounding amino acid 1112 of rat neurexin
Formulation:	100 µl (1 mg/ml) immunoaffinity purified rabbit polyclonal antibody in phosphate-buffered saline (PBS) containing 30% glycerol, 0.5% BSA, and 0.01% thimerosal.
Concentration:	lot specific
Purification:	Affinity purified
Conjugation:	Unconjugated
Storage:	Store at -20°C as received.
Stability:	Stable for 12 months from date of receipt.
Gene Name:	neurexin 3
Database Link:	<a href="#">NP_001098720</a> <a href="#">Entrez Gene 116508 Rat</a> <a href="#">Entrez Gene 9369 Human</a> <a href="#">Q9Y4C0</a>
Background:	Neurexins comprise a family of neuronal cell surface proteins present primarily in the brain. Neurexins are thought to serve as signaling receptors and may play a role in axon guidance and synaptogenesis. The cytoplasmic tail of neurexin interacts with the synaptic vesicle protein synaptotagmin and binds to CASK, a protein with homology to the PSD95 family of synaptic junction proteins. The antibody recognizes both alpha (~170 kDa) and beta (~50 kDa) isoforms of Neurexin in samples from human, rat, and bovine origins.
Synonyms:	C14orf60
Protein Families:	Druggable Genome, Transmembrane



[View online »](#)

Protein Pathways: Cell adhesion molecules (CAMs)

**Product images:**



Western blot analysis of Neurexin expression in tissue lysate from rat kidney (Lane 1) and rat liver (Lane 2).