

Product datasheet for **TA318908**

CCR2 Rabbit Polyclonal Antibody

Product data:

Product Type:	Primary Antibodies
Applications:	WB
Recommended Dilution:	WB: 0.5-4ug/ml
Reactivity:	Human, Mouse, Rat
Host:	Rabbit
Isotype:	IgG
Clonality:	Polyclonal
Immunogen:	Synthetic peptide surrounding to amino acid 353 of rat CCR2
Formulation:	100 µg (0.5 mg/ml) affinity purified rabbit anti-CCR2 polyclonal antibody in phosphate buffered saline (PBS), pH 7.2, containing 30% glycerol and 0.01% Thimerosal.
Concentration:	lot specific
Purification:	Affinity purified
Conjugation:	Unconjugated
Storage:	Store at -20°C as received.
Stability:	Stable for 12 months from date of receipt.
Gene Name:	C-C motif chemokine receptor 2
Database Link:	NP_001116513

[Entrez Gene 12772 Mouse](#)[Entrez Gene 60463 Rat](#)[Entrez Gene 729230 Human P41597](#)

Background: Chemokines play important roles in inflammation and critical for the recruitment of effector immune cells to sites of infection. Chemokines activate leukocytes by binding to G protein coupled receptors. The ever-growing chemokine receptor subtypes can be divided into 2 major groups, CXCR and CCR, based on the 2 major classes of chemokines. One of the CCR receptors, CCR1, is expressed on neutrophils, monocytes, lymphocytes, and eosinophils and binds the leukocyte chemoattractant and hemopoiesis regulator macrophage-inflammatory protein (MIP-1), eotaxin, as well as several other related chemokines. Mice lacking the chemokine receptor CCR1 have defects in neutrophil trafficking and proliferation.

Synonyms: CC-CKR-2; CCR-2; CCR2A; CCR2B; CD192; CKR2; CKR2A; CKR2B; CMKBR2; MCP-1-R

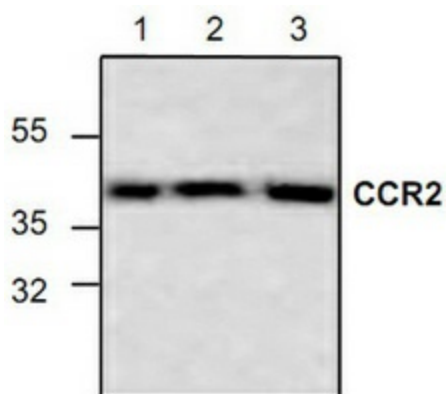


[View online »](#)

Protein Families: Druggable Genome, Transmembrane

Protein Pathways: Chemokine signaling pathway, Cytokine-cytokine receptor interaction

Product images:



Western blot analysis of CCR2 expression in lysate from rat kidney (Lane 1), 3T3 cells (Lane 2) and Jurkat cells (Lane 3).