

Product datasheet for **TA318905**

CREB1 Rabbit Polyclonal Antibody

Product data:

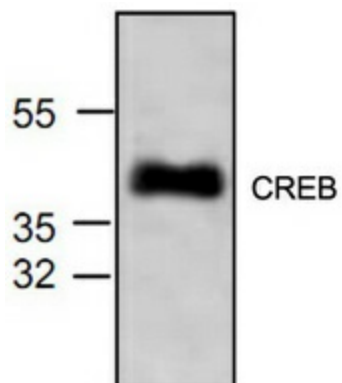
Product Type:	Primary Antibodies
Applications:	WB
Recommended Dilution:	WB: 0.5-4ug/ml, IHC: 5ug/ml
Reactivity:	Human, Mouse, Rat
Host:	Rabbit
Isotype:	IgG
Clonality:	Polyclonal
Immunogen:	Synthetic peptide surrounding amino acid 109 of rat CREB
Formulation:	100 µg (0.5 mg/ml) purified rabbit polyclonal antibody in phosphate-buffered saline (PBS) containing 30% glycerol, 0.5% BSA and 0.01% thimerosal.
Concentration:	lot specific
Purification:	Affinity purified
Conjugation:	Unconjugated
Storage:	Store at -20°C as received.
Stability:	Stable for 12 months from date of receipt.
Gene Name:	cAMP responsive element binding protein 1
Database Link:	NP_004370 Entrez Gene 12912 Mouse Entrez Gene 81646 Rat Entrez Gene 1385 Human P16220
Background:	Transcription factor CREB binds the cAMP response element (CRE) and activates transcription in response to a variety of extracellular signals including neurotransmitters, hormones, membrane depolarization, and growth or neurotrophic factors. Protein kinase A and the calmodulin-dependent protein kinase CaMKII stimulate CREB phosphorylation at Ser133, a key regulatory site controlling transcriptional activity. Phosphorylation at Ser133 is also mediated by p44/42 MAP kinase, p90RSK, p38 MAP kinase and MSK1. CREB appears to play an important role in learning and memory in both flies and mice.
Synonyms:	CREB
Protein Families:	Druggable Genome, Transcription Factors



[View online »](#)

Protein Pathways: Antigen processing and presentation, Huntington's disease, Melanogenesis, Prostate cancer

Product images:



Western blot analysis of CREB in 3T3 cell lysate.