

Product datasheet for **TA318902**

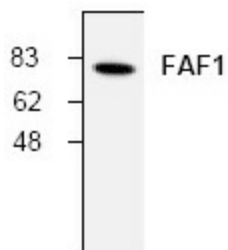
FAF1 Rabbit Polyclonal Antibody

Product data:

Product Type:	Primary Antibodies
Applications:	WB
Recommended Dilution:	WB: 0.5-4ug/ml, IP, IHC
Reactivity:	Human, Mouse, Rat
Host:	Rabbit
Isotype:	IgG
Clonality:	Polyclonal
Immunogen:	Synthetic peptide corresponding to residues surrounding amino acid 640 of human FAF1
Formulation:	100 µg (0.5 mg/ml) affinity purified rabbit anti-FAF1 polyclonal antibody in phosphate buffered saline (PBS), pH 7.2, containing 30% glycerol, 0.5% BSA, 0.01% thimerosal.
Concentration:	lot specific
Purification:	Affinity purified
Conjugation:	Unconjugated
Storage:	Store at -20°C as received.
Stability:	Stable for 12 months from date of receipt.
Gene Name:	Fas associated factor 1
Database Link:	NP_572051 Entrez Gene 14084 Mouse Entrez Gene 140657 Rat Entrez Gene 11124 Human Q9UNN5
Background:	FAF1 (Fas-associated protein factor 1) specifically interacts with the cytoplasmic domain of wild type, but not mutated, Fas in both yeast and mammalian cells. When transiently expressed in T cells, FAF1 potentiates Fas-induced apoptosis. In contrast to TRADD, FADD, and RIP, FAF1 lacks a DDH (Death domain homologous region) and cannot induce apoptosis independent of Fas activation.
Synonyms:	CGI-03; Fas (TNFRSF6) associated factor 1; FAS-associated factor 1; FLJ37524; hFAF1; HFAF1s; TNFRSF6-associated factor 1; UBXD12; UBX domain protein 3A; UBXN3A
Protein Families:	Druggable Genome



[View online »](#)

Product images:

Western blot analysis of FAF1 in rat kidney tissue extract.